

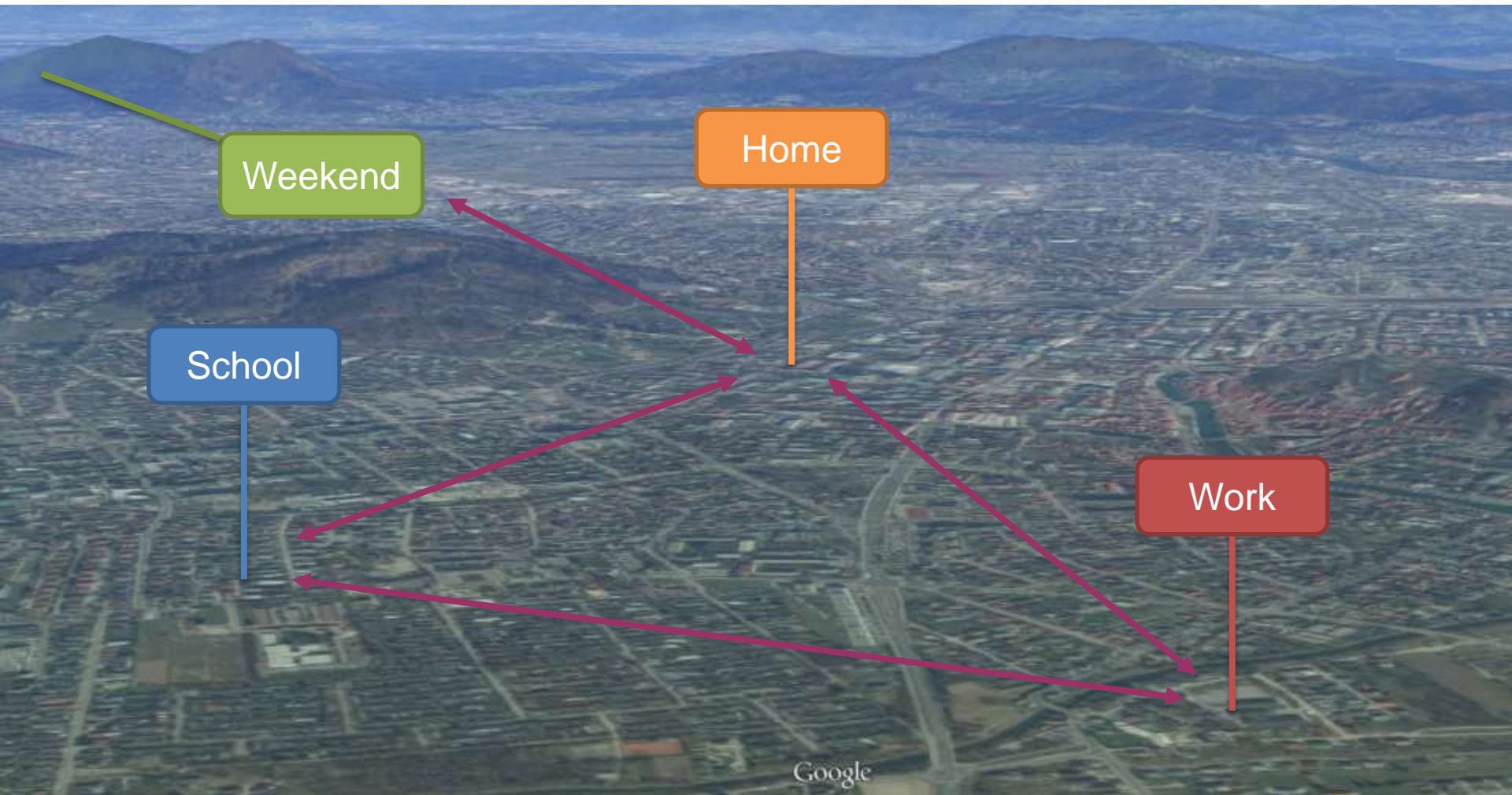


STAGE

integrated system for dissemination of
geospatial statistical data

TERMINAL CENI ZA ENOTNE PROMETNE TOČKE



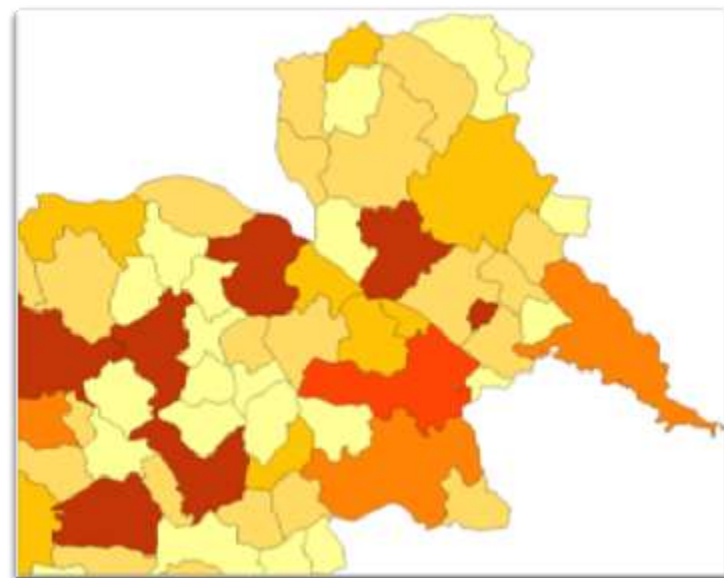


Geospatial statistical data

+

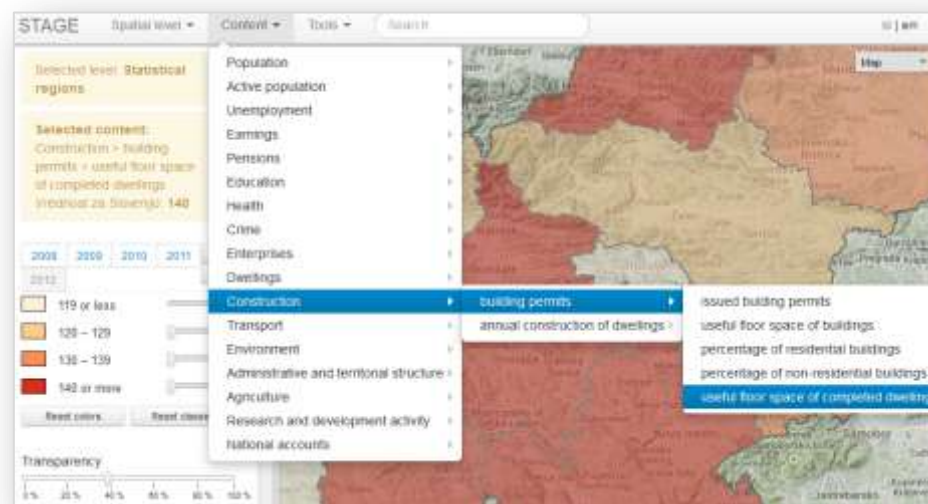
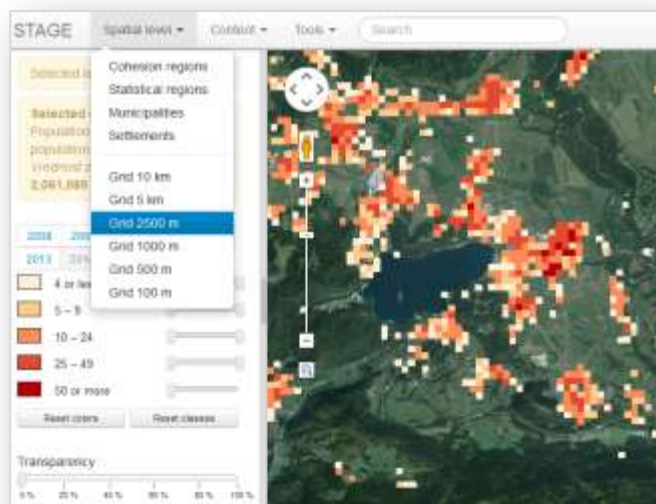


=



STAGE 1.0 – statistics & geography

- EU grant Merging statistics and geospatial information I & IV
- 10 territorial levels (administrative units & grids)
- 20 statistical domains
- 300 statistical variables
- [STAGE](#)





Various user groups

- Products and services
- Access
- Geospatial statistical literacy

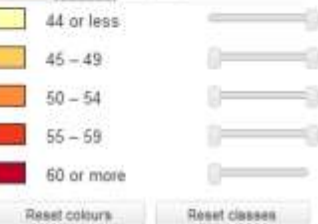


STAGE Spatial level ▾ Content ▾ Tools ▾ Search

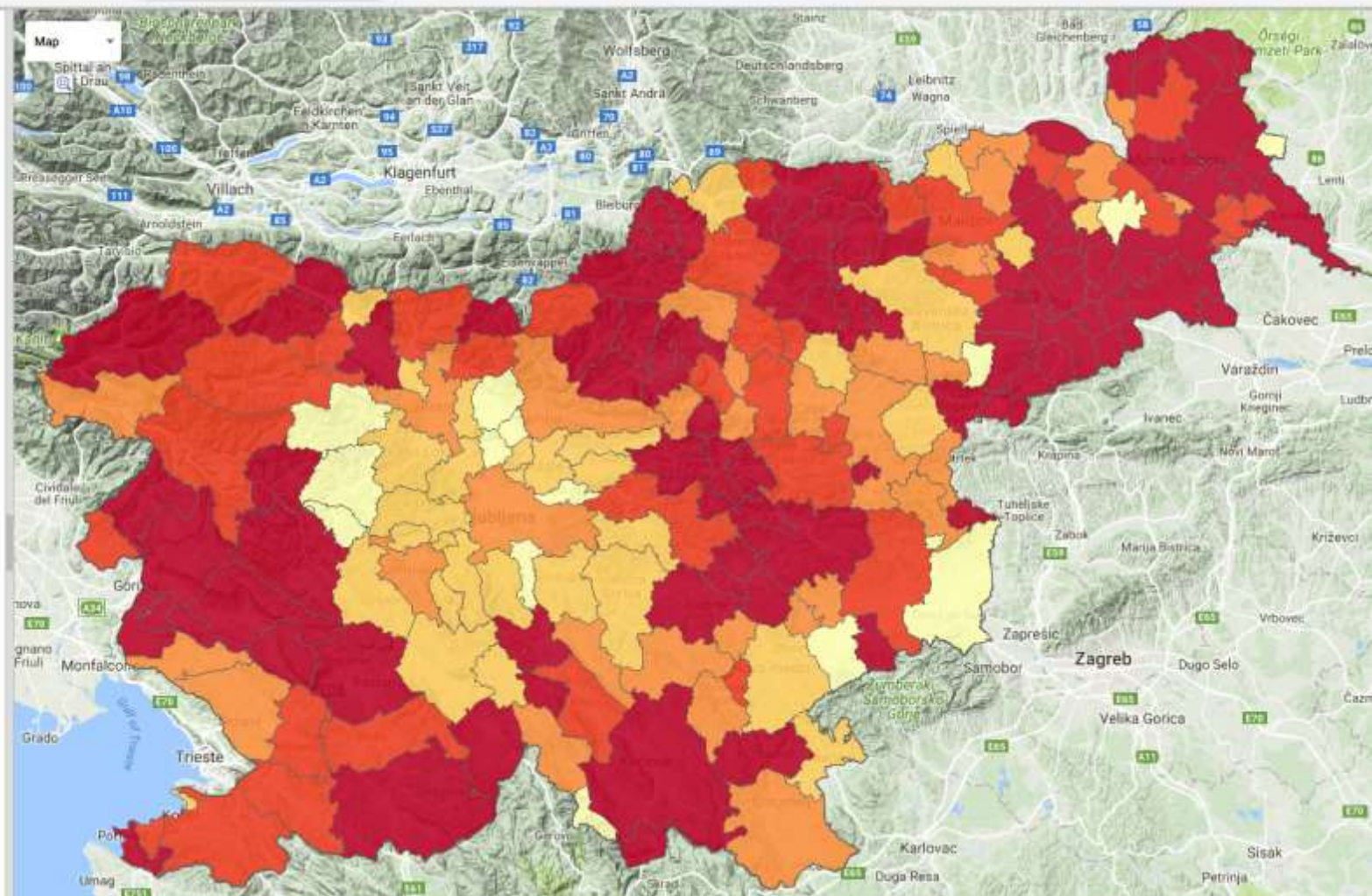
Selected level: **Municipalities**

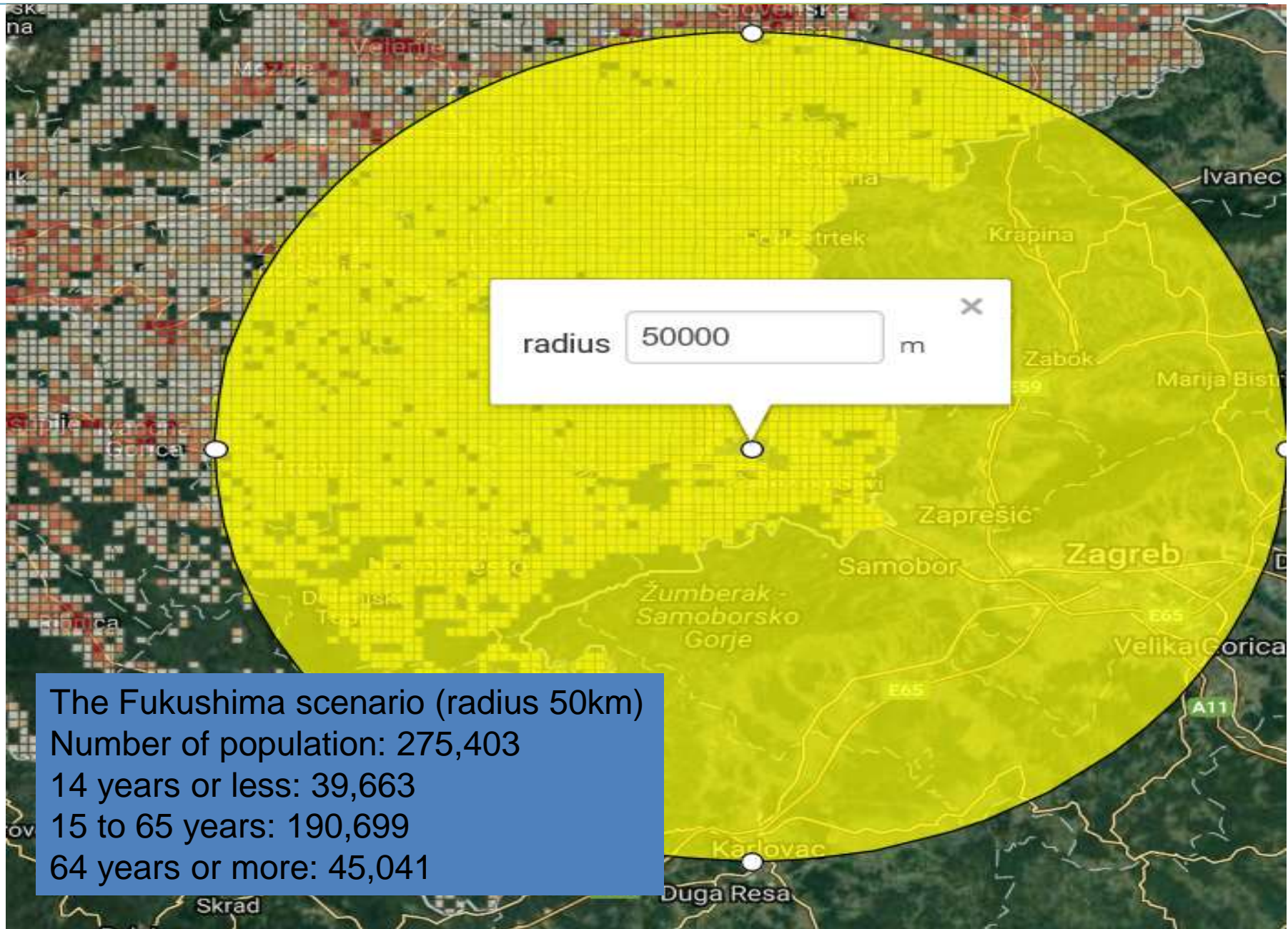
Selected content:
Health > drug consumption >
antidepressants
Data for Slovenia: 57

2008 2010 2011 2012 2013
2014 2015



Data show the consumption of antidepressants expressed in defined daily doses per 1,000 population per day. Antidepressants (N05A) are used for the treatment of depression, anxiety disorders and some personality disorders. Source of data is National Institute of Public Health.

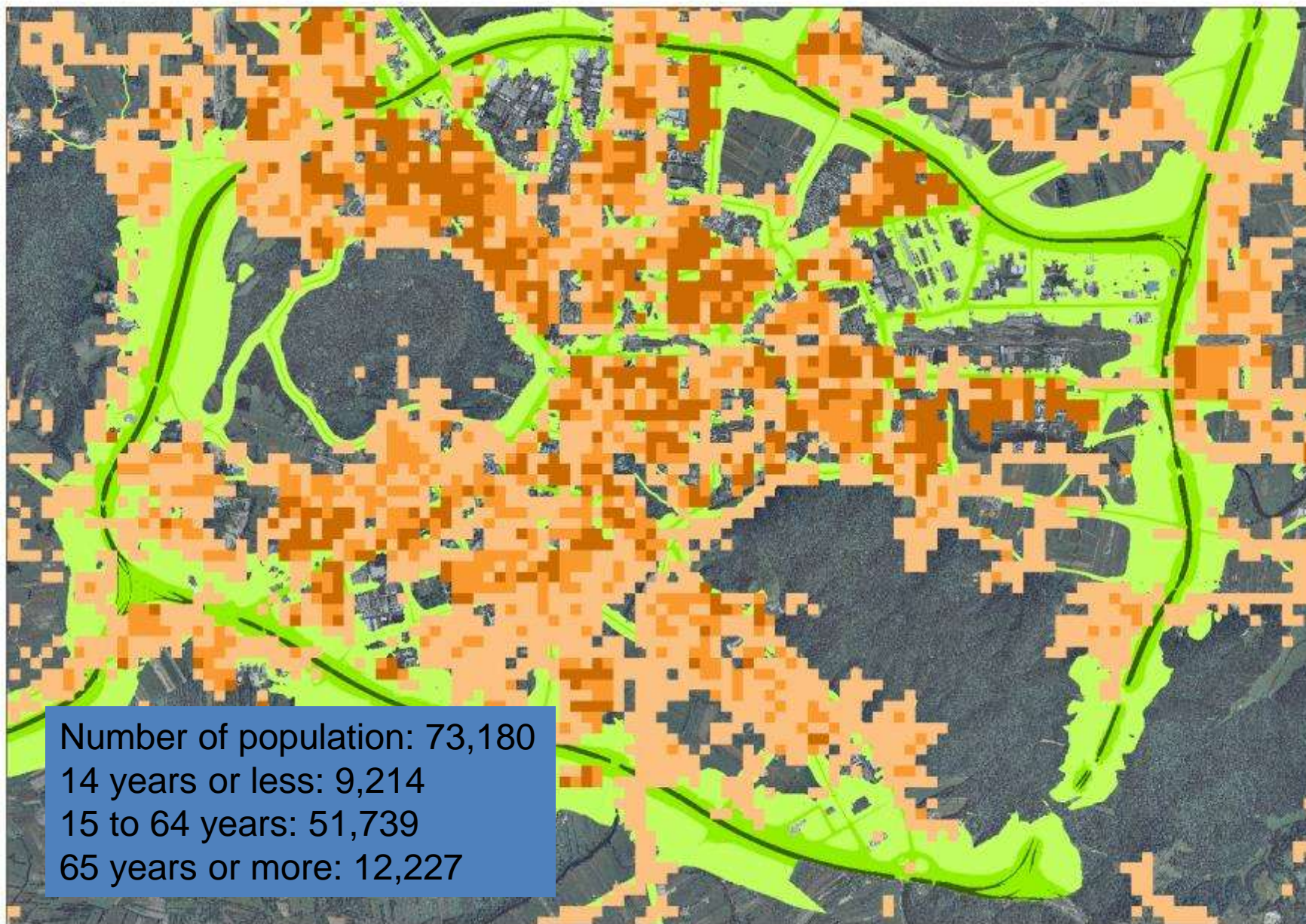






STAGE data + user defined geospatial data

- Exposure to the noise pollution around major roads in Ljubljana and around the Ljubljana highway ring
- Advanced GIS users



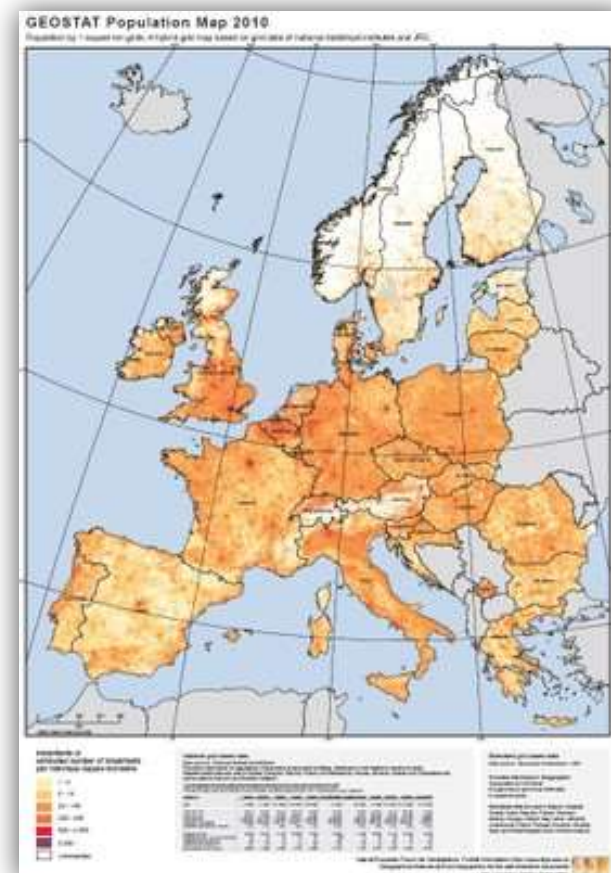
STAGE data + new data sources (big data)



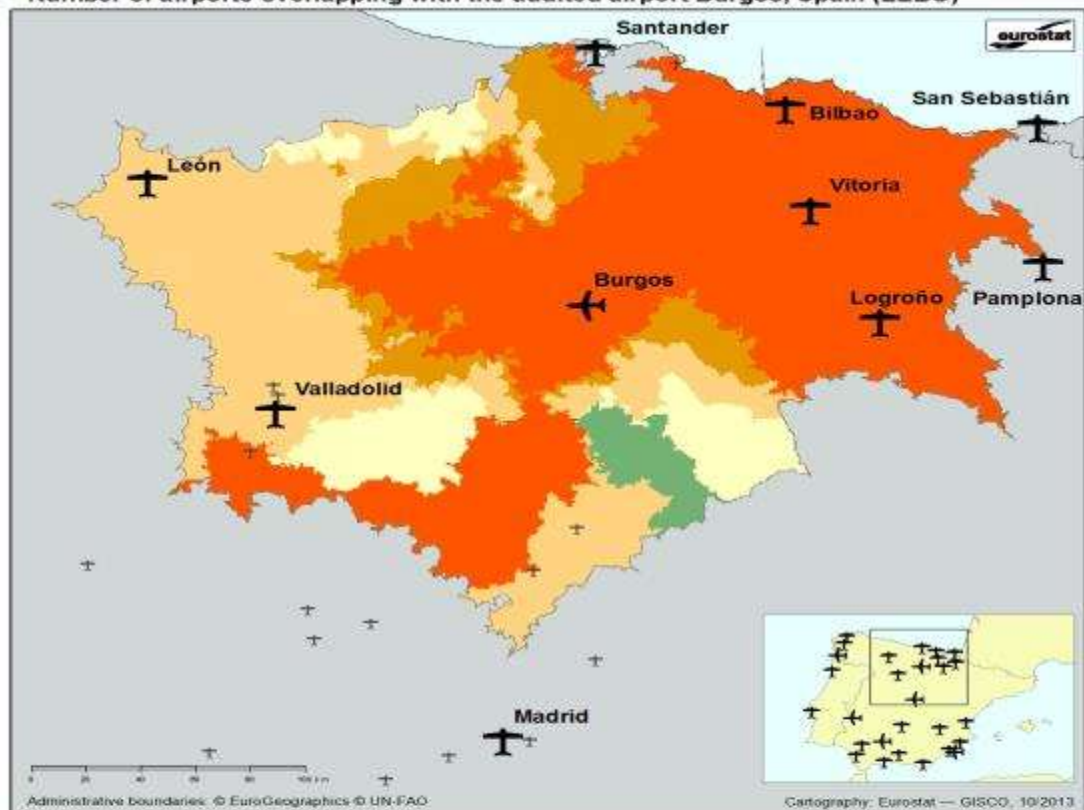
STAGE data on EU level

- EU Court of Auditors – [EU funded airports](#)
 - cohesion policy
 - needs
 - planning
 - managing
 - financial efficiency

- population, 1km grid, [GEOSTAT](#)



Number of airports overlapping with the audited airport Burgos, Spain (LEBG)



Legend

- 2 hour travel time from audited airport
- Audited Airports
- Competitor Airports
- Non-competitor airports
- Number of Overlapping Airports**
- 0
- 1
- 2
- 3
- 4+
- Country Border

Burgos (LEBG) overlap with airport (ICAO code)	No of residents in the overlap area per airport	Residents in overlap (%)	Distance to competitor airport (km)	Time to competitor airport (minutes)	
Bilbao (LEBB)	2 987 330	73.99	150	90	
León (LELN)	1 056 690	26.03	184	105	
Madrid Barajas (LEMD)	148 291	3.65	237	151	
Pamplona (LEPP)	2 523 380	62.16	194	124	
Valladolid (LEVJ)	1 220 930	30.06	140	96	
Vitoria (LEVT)	3 047 830	75.06	114	70	
Santander (LEXJ)	2 721 210	67.04	153	122	
San Sebastián (LESO)	2 549 690	62.81	226	126	
Logroño (LERJ)	2 635 672	69.06	120	85	
No of residents within 2 hours from audited airport	Total no of residents in overlap with access to multiple airports	Residents in overlap with access to multiple airports (%)	Distance to rail station (km)	Distance to rail line (km)	No of tourist nights per year within 2 hours from audited airport
4 059 290	4 048 972	99.75	0.52	0.23	17 919 871

Sources: Eurostat Population (2006) and Tourism data (2008/2010)

Number of airports overlapping with the audited airport Tallinn, Estonia (EETN)



Tallinn (EETN) overlap with airport (ICAO code)		No. of residents in the overlap area per airport	Residents in overlap (%)	Distance to competitor airport (km)	Time to competitor airport (minutes)
Helsinki (EFHK)		562 190	43.81	109	124
Tartu (EETU)		120 234	9.37	190	161
No. of residents within 2 hours from audited airport	Total no. of residents in overlap with access to multiple airports	Residents in overlap with access to multiple airports (%)	Distance to rail station (km)	Distance to rail line (km)	No. of tourist nights per year within 2 hours from each airport
1 283 340	682 424	53.18	2.30	0.83	1 707 093

Sources: Eurostat Population (2006) and Tourism data (2006/2010)

STAGE - INSPIRE

- Network services STAGE1.0
 - Discovery
 - View
 - Download
 - Transformation
- Metadata descriptions STAGE 2.0
- Data themes STAGE1.0
 - Hierarchical grid
 - Statistical units
 - Population distribution

STAGE 2.0

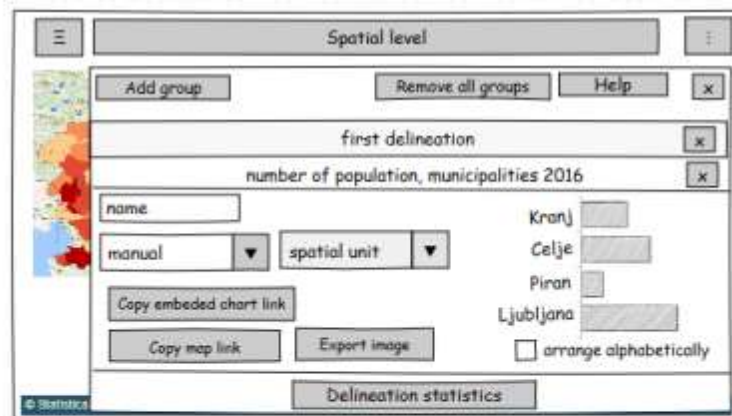
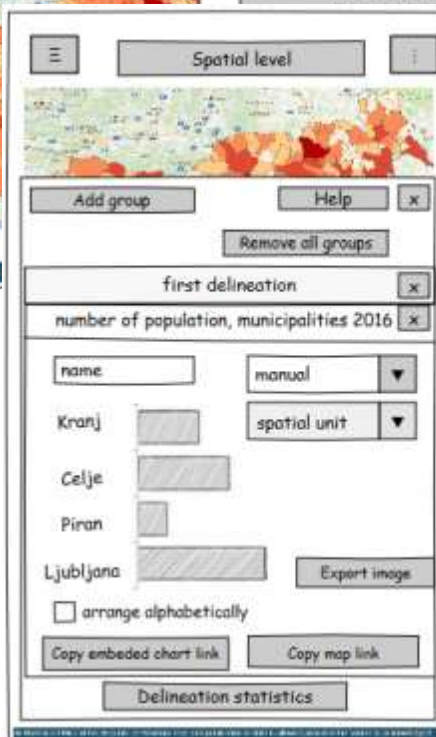
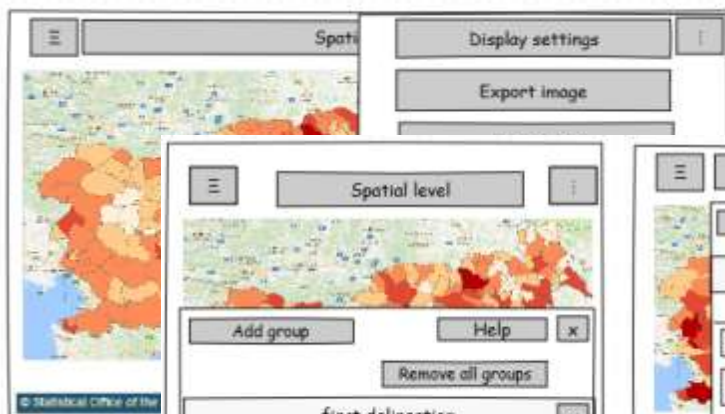
STAGE v2.0 in 2017:

- Improved data and picture export
- Optimisation of spatial delineation
- New contents (social statistics)
- Small screens – tablets, smart phones (user defined statistics on the spot)
- STAGE as an geospatial statistical data infrastructure

Sharing:

- Open source – EU public license

STAGE 2.0





Thank you!