



European
Commission



INSPIRE

State of implementation, challenges and opportunities in a Europe fit for the Digital Age

Czecho-Slovak INSPIRE Conference
8 October 2019, Strbske Pleso

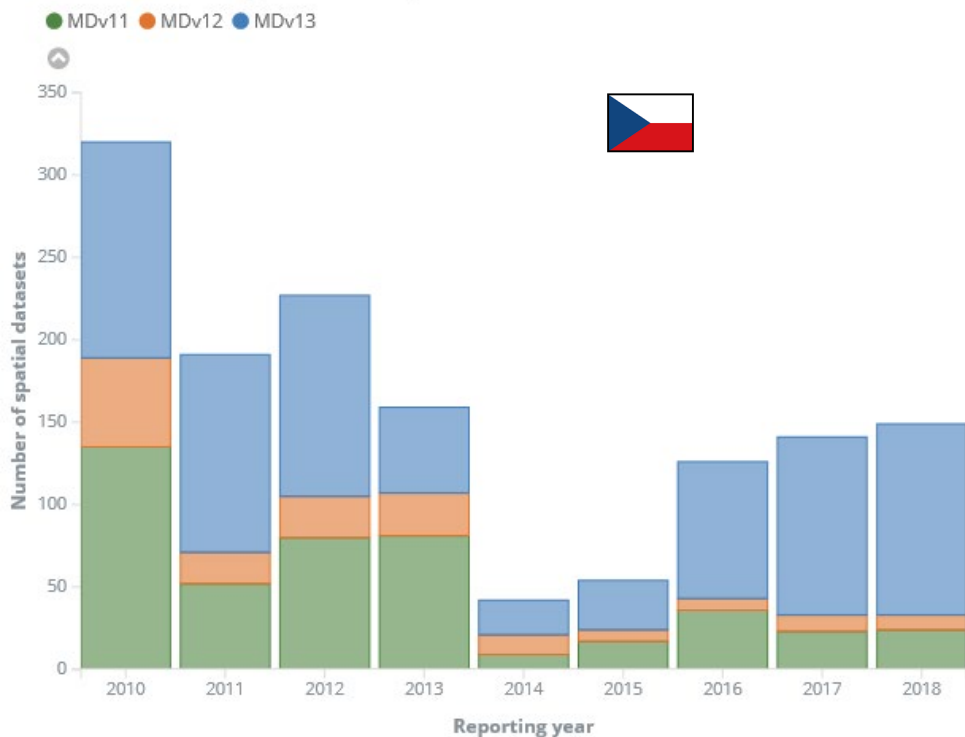
Robert Konrad, Head of Unit
European Commission
Directorate General for Environment
Unit E.4 – Compliance & Better Regulation



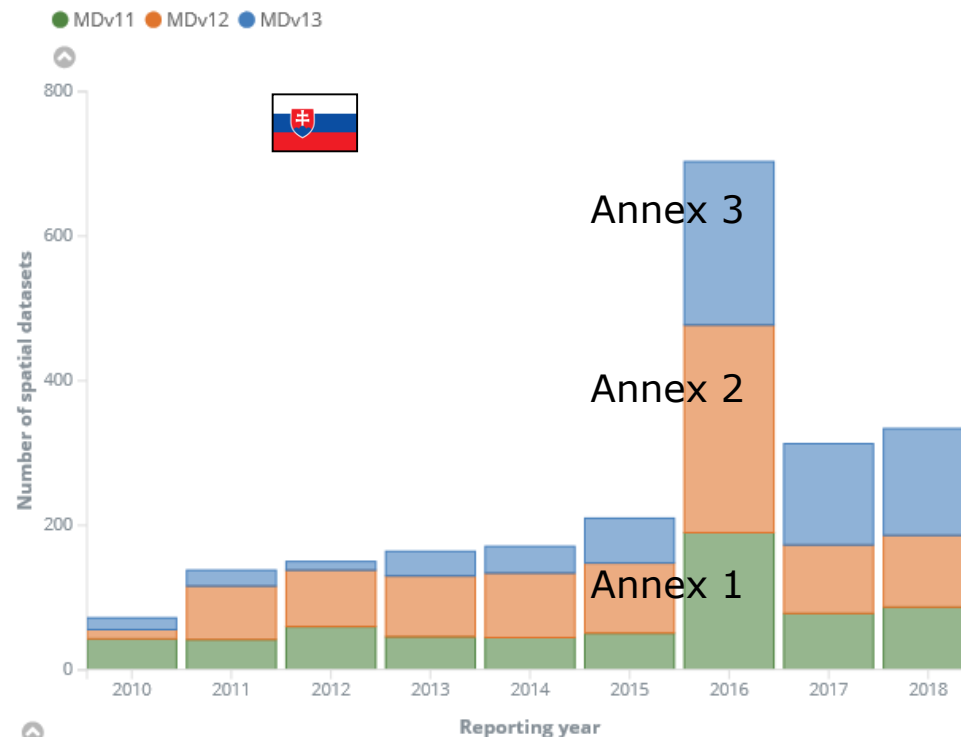


- The total number of reported datasets has slightly increased in CZ and SK.

Indicator / Number of spatial data sets per annexes



Indicator / Number of spatial data sets per annexes



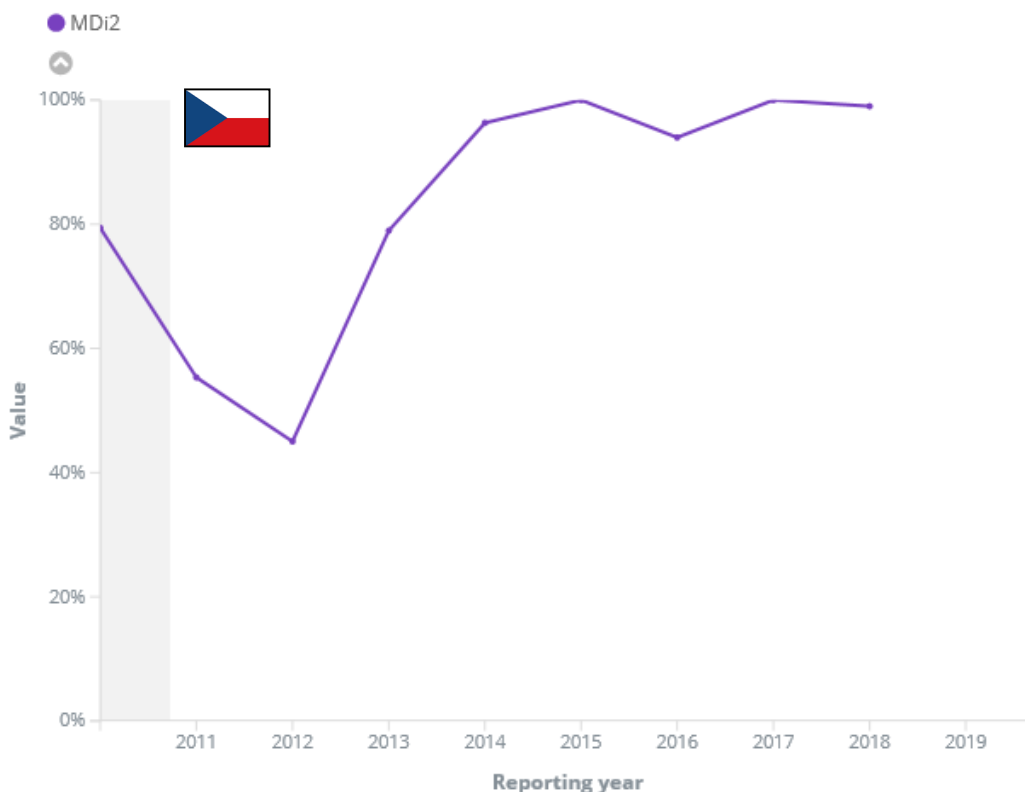
- <https://inspire-dashboard.eea.europa.eu/dashboard/app/kibana#/dashboards>



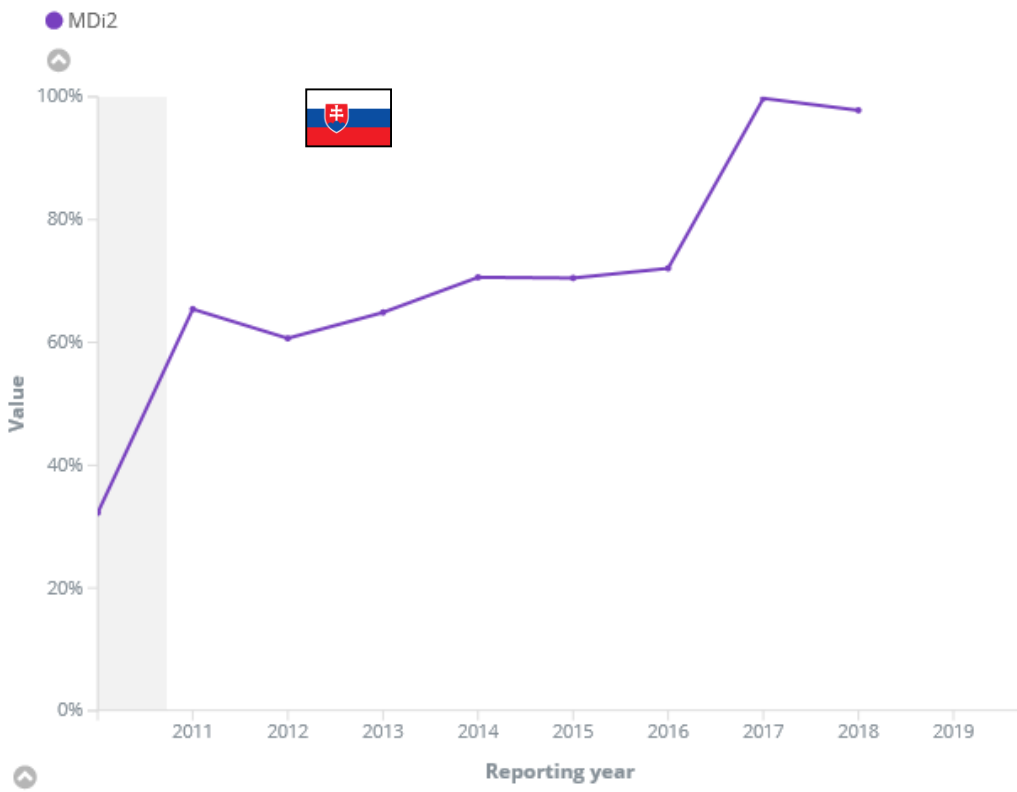
- **99% of spatial data sets and services are reported to have conformant metadata.**

- **97,81% of spatial data sets and services are reported to have conformant metadata.**

Indicator / Percentage of spatial data sets and services with conformant metadata (MDi2) ↗ ↘



Indicator / Percentage of spatial data sets and services with conformant metadata (MDi2) ↗ ↘



CZ & SK State of Play

INSPIRE Monitoring 2018



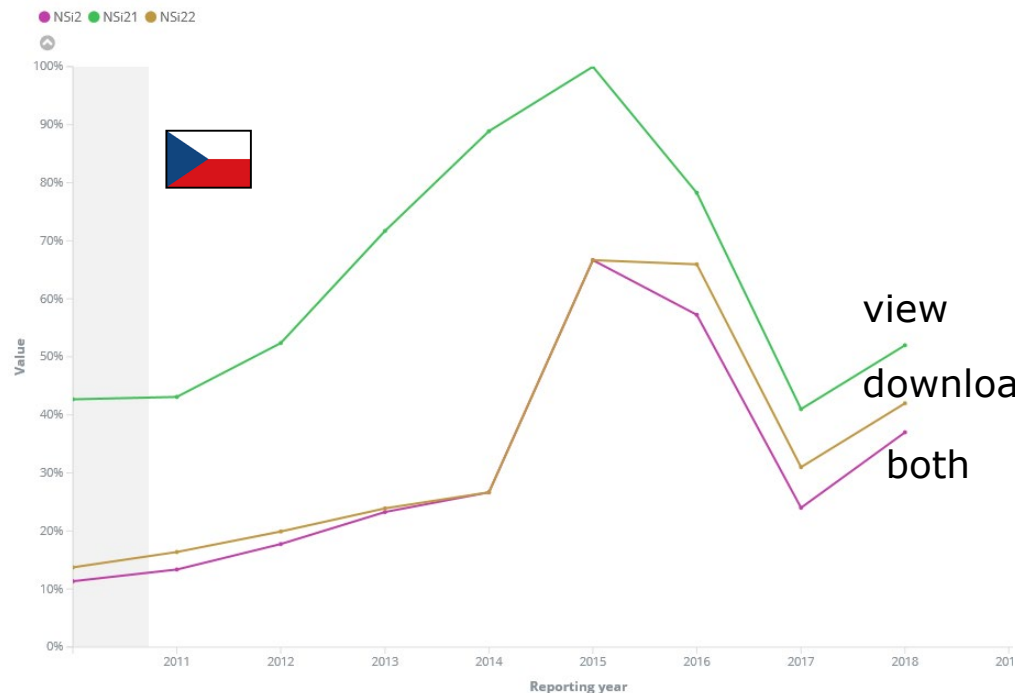
Accessibility of spatial data

Percentage of spatial data sets for which view, download or both services exist

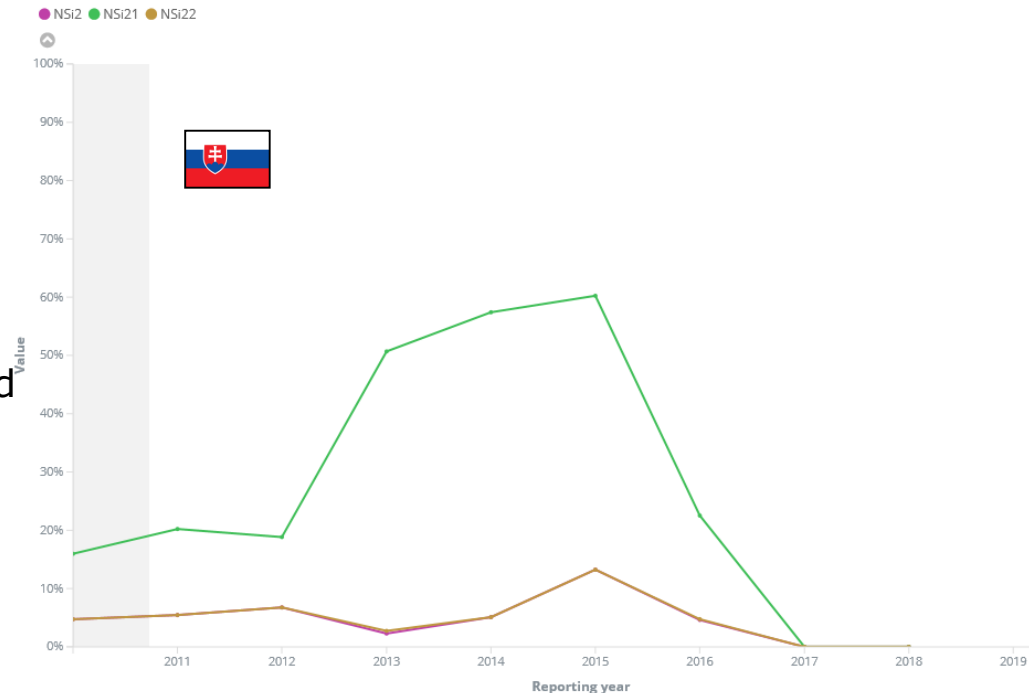
- Data with: View 52% - Download 42% - both 37%
- The accessibility of spatial data through view and download service has slightly increased

- Data with: View 0% - Download 0% - both 0%
- No spatial data was reported accessible.

Indicator / Percentage of spatial data sets for which a view service (NSi21), a download service (NSi22) or a view and download (NSi2) exist



Indicator / Percentage of spatial data sets for which a view service (NSi21), a download service (NSi22) or a view and download (NSi2) exist



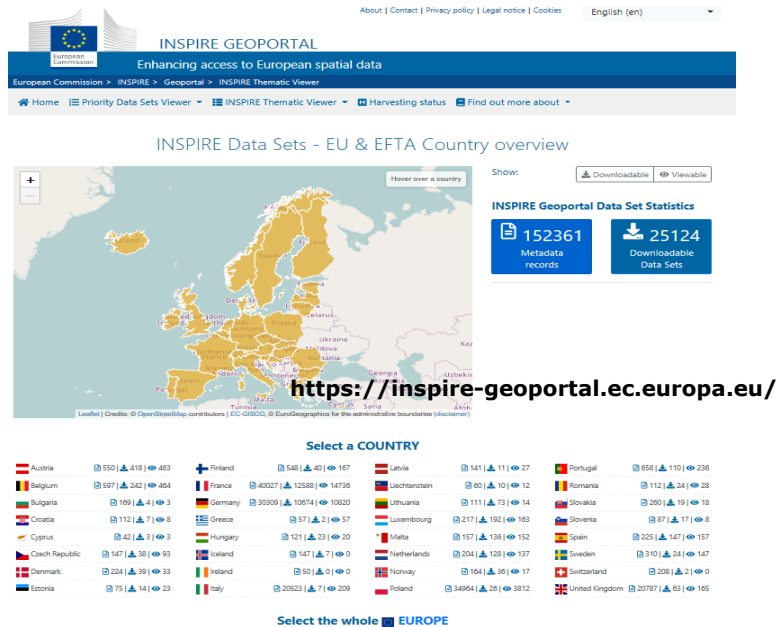
- <https://inspire-dashboard.eea.europa.eu/dashboard/app/kibana#/dashboards>

Main findings from the 2019 monitoring exercise

- **Steady increase of total number of reported datasets and services, but most of them are reported by only five countries (DE, FR, IT, PL, UK)**
- **Low availability of datasets through network services (less than half!)**
- **Metadata are steadily reaching full conformity, but not yet there**
- **Conformity in services and in data harmonisation is progressing slowly**
- **Despite most deadlines in the past:**
 - **Only half of network services are reported to be compliant**
 - **Only half of Annex I datasets are reported to be harmonised**



What changed since last year?



<https://inspire-geoportal.ec.europa.eu/>

The new EC INSPIRE geoportal was officially launched in September 2018 at the INSPIRE Conference.

The geoportal not only provides a central gateway for accessing the INSPIRE infrastructure, it is also a dashboard to monitor data availability and accessibility.

Commission Implementing Decision (EU) 2019/1372 of 19 August 2019 implementing Directive 2007/2/EC of the European Parliament and of the Council as regards monitoring and reporting

http://data.europa.eu/eli/dec_impl/2019/1372/oj

Regulation (EU) 2019/1010 of the European Parliament and of the Council of 5 June 2019 on the alignment of reporting obligations in the field of legislation related to the environment

<http://data.europa.eu/eli/reg/2019/1010/oj>

The review of INSPIRE monitoring and reporting was concluded during summer 2019. A new Implementing Decision was adopted end of August and relevant reporting articles in the Directive were changed in the horizontal reporting alignment Regulation adopted in May.

EC INSPIRE Geoportal



The new EC INSPIRE geoportal, a breath of fresh air!

About | Contact | Privacy policy | Legal notice | Cookies English (en)

INSPIRE GEOPORTAL

Enhancing access to European spatial data

European Commission > INSPIRE > Geoportal > Results

Home | Priority Data Sets Viewer | INSPIRE Thematic Viewer | Harvesting status | Find out more about

About | Contact | Privacy policy | Legal notice | Cookies English (en)

INSPIRE GEOPORTAL

Enhancing access to European spatial data

European Commission > INSPIRE > Geoportal > Results

Home | Priority Data Sets Viewer | INSPIRE Thematic Viewer | Harvesting status | Find out more about

Data sets in Czech Republic

147 | 38 | 93

Filter dataset by: Downloadable Viewable Show dataset titles in: original MD language Show only: dataset with National coverage

- Countries
- Themes
 - Addresses (1)
 - Administrative units (1)
 - Cadastral parcels (2)
 - Geographical grid systems (2)
 - Geographical names (2)
 - Hydrography (3)
 - Protected sites (8)
 - Coordinate reference systems
 - Transport networks (7)
 - Elevation (2)
 - Geology (5)
 - Land cover (2)
 - Orthoimagery (1)
 - Atmospheric conditions (1)
 - Agricultural and aquaculture facilities (1)
 - Area management/restriction/regulation zones and reporting units (17)
 - Bio-geographical regions (1)
 - Buildings (3)
 - Environmental monitoring facilities (8)

Title	Properties
INSPIRE Protected sites - NATURA 2000	
Strategické hlukové mapy 2017	
CORINE Land Cover 2018 databáze České republiky (CLC18_CZ)	
INSPIRE – Zóny a aglomerace hodnocení a řízení kvality ovzduší	
IPPC - Integrovaná prevence a omezování znečištění	
INSPIRE téma Adresy (AD)	
INSPIRE datová sada pro téma Dopravní síť - letecká doprava (TN_AIR)	
INSPIRE téma Územní správní jednotky (AU)	
Meteorologická data měřená v síti RBSN (Regional Basic Synoptic Network)	
INSPIRE téma Budovy (BU)	

Show 10 entries

Showing 1 to 10 of 147 entries

Previous 1 2 3 4 5 ... 15 Next

Data sets in Slovakia

260 | 19 | 18

Filter dataset by: Downloadable Viewable Show dataset titles in: original MD language Show only: dataset with National coverage

- Countries
- Themes
 - Addresses (1)
 - Administrative units (14)
 - Cadastral parcels (4)
 - Geographical grid systems (4)
 - Geographical names (9)
 - Hydrography (50)
 - Protected sites (8)
 - Coordinate reference systems (6)
 - Transport networks (23)
 - Elevation (11)
 - Geology (74)
 - Land cover (18)
 - Orthoimagery (8)
 - Atmospheric conditions
 - Agricultural and aquaculture facilities (10)
 - Area management/restriction/regulation zones and reporting units (9)
 - Bio-geographical regions (6)
 - Buildings (7)
 - Environmental monitoring facilities (22)
 - Energy resources (5)
 - Habitats and biotopes (5)

Title	Properties
INSPIRE PD 1,01 Zóny hodnotenia a riadenia kvality ovzdušia, Aglomerácie hodnotenia a riadenia kvality ovzdušia	
INSPIRE PD 12,01 Monitorovacie stanice vodných útvarov	
INSPIRE PD 9,01 Správne územia povodí (Rámcová smernica o vode)	
INSPIRE PD 6,01 Aglomerácie	
INSPIRE PD 33,01 Lokalizácia bodov vypúšťania komunálnych odpadových vôd do vodných útvarov (podľa WFD 200/60/EC)	
INSPIRE PD 9,02 Územné jednotky povodia (rámcová smernica o vode)	
INSPIRE PD 10,02 Rieky (rámcová smernica o vode)	
INSPIRE PD 10,05 Lokalizácia vodných útvarov podzemných vôd	
INSPIRE PD 10,06 Lokalizácia riečnej siete	
INSPIRE - Administratívne jednotky	

Show 10 entries

Showing 1 to 10 of 260 entries

Previous 1 2 3 4 5 ... 26 Next



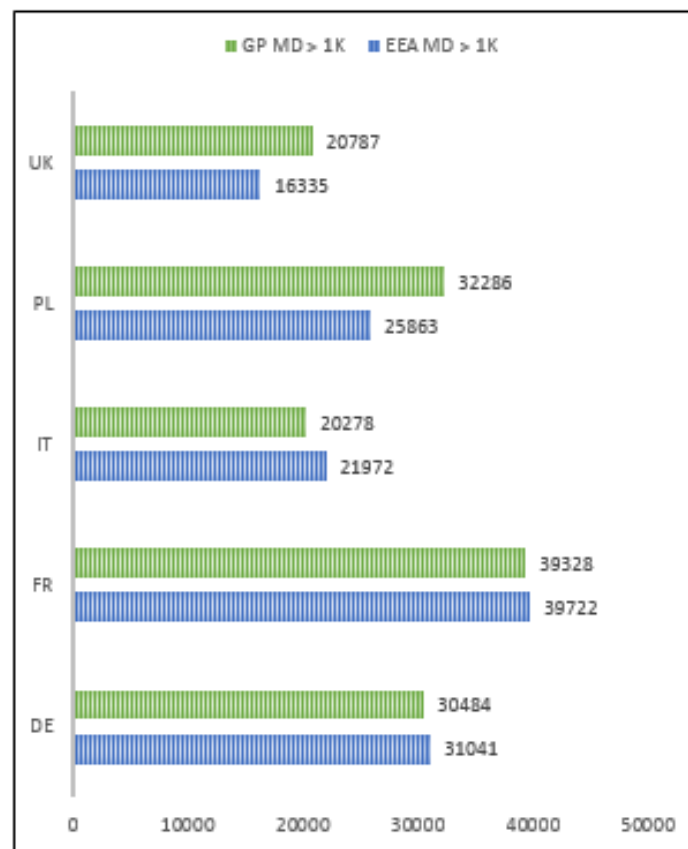
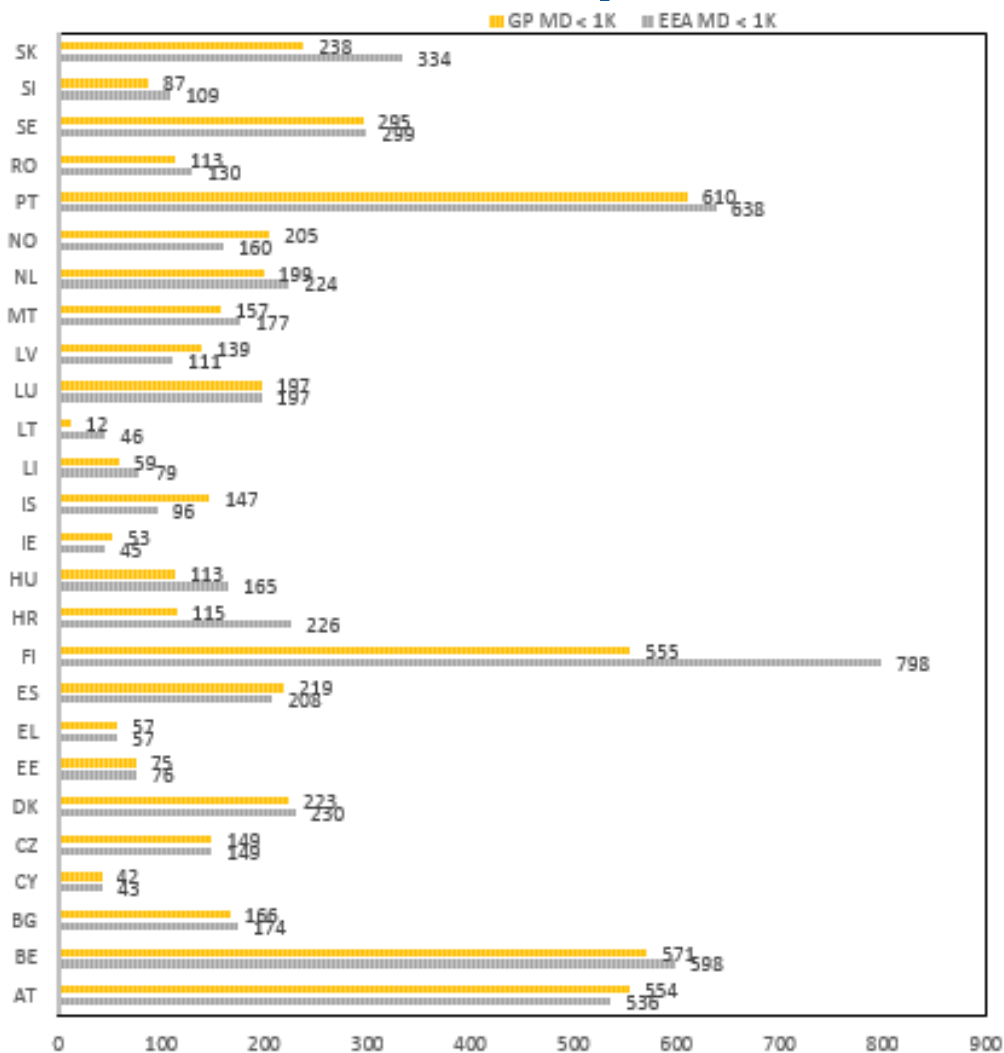
Driven by Metadata: Once-only, Reuse & Active dissemination

- *Maximize the reuse of Metadata and Discovery Network Services for the reporting process.*
- *Implements the "Once Only" principle and makes it less burdensome for Member States to provide the necessary information.*
- *Revised set of indicators for better insight in the implementation progress and the effectiveness of the Directive.*
- *Country Fiches for comprehensive visualization of the indicators, assessment of the implementation progress and better comparison across Member States*

Comparing some numbers Reporting vs Geoportal



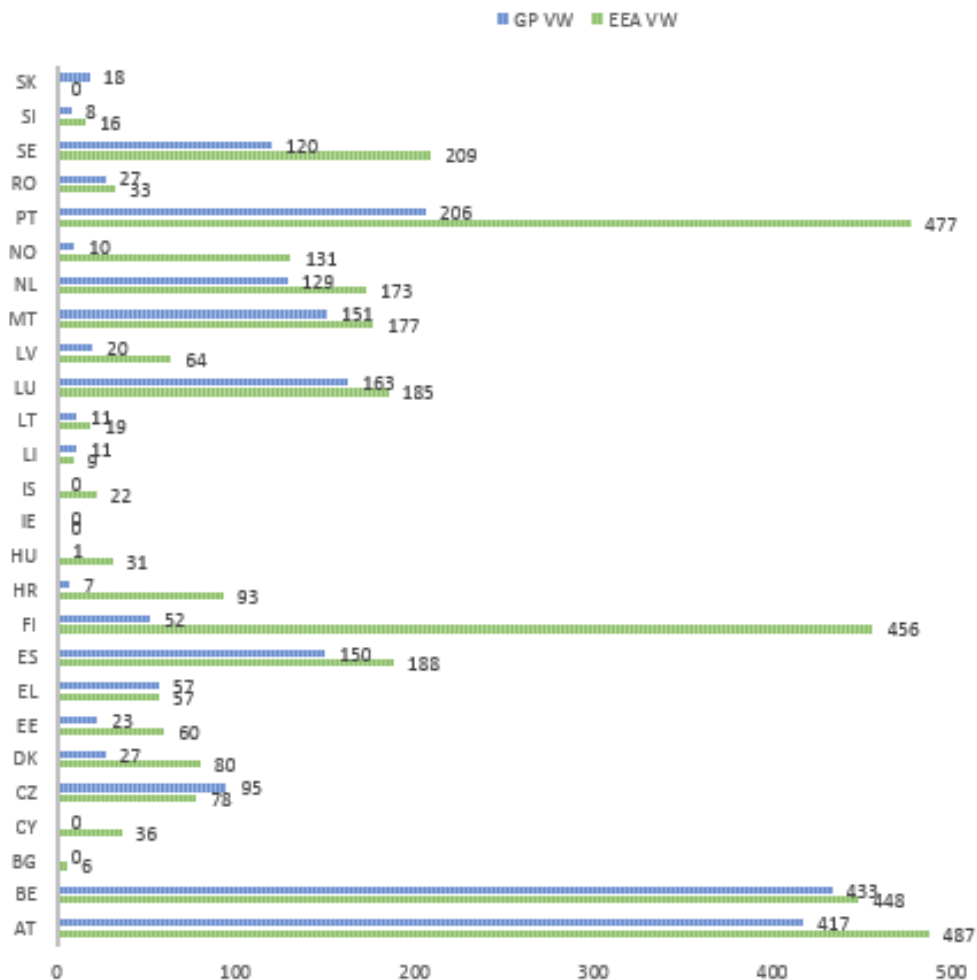
Metadata – Comparison official monitoring and EU Geoportal



Comparing some numbers Reporting vs Geoportal



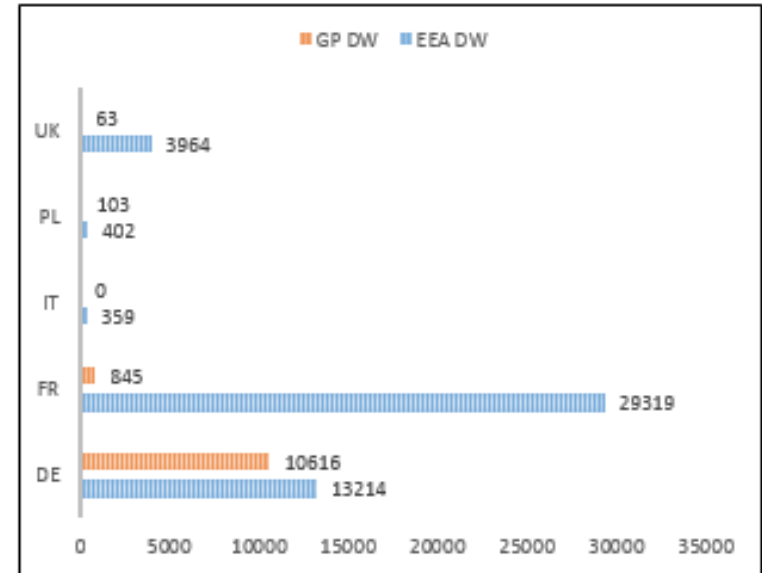
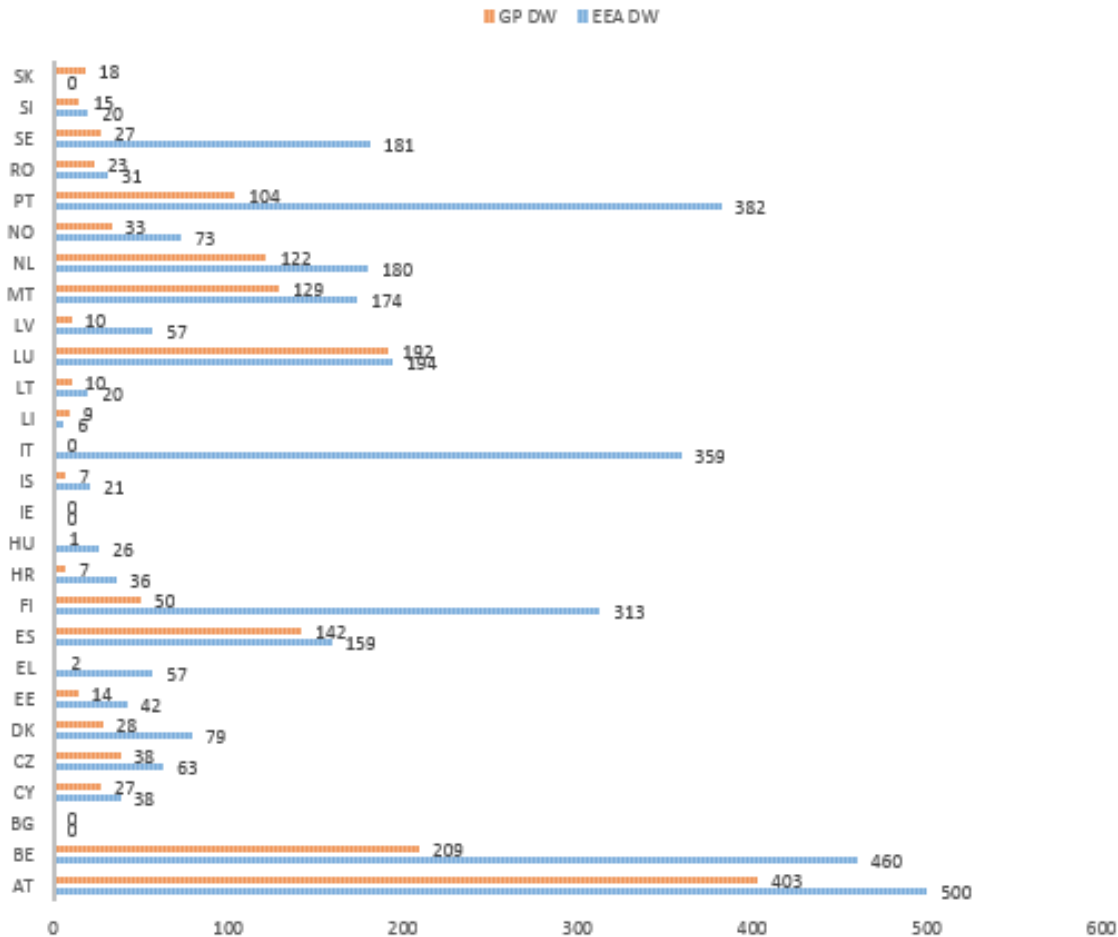
Viewable data – Comparison official monitoring and EU Geoportal



Comparing some numbers Reporting vs Geoportal



Downloadable data – Comparison official monitoring and EU Geoportal





Compliance promotion Headliners

- **Close existing implementation gaps.**
- **Priority EU use case "environmental monitoring & reporting"**

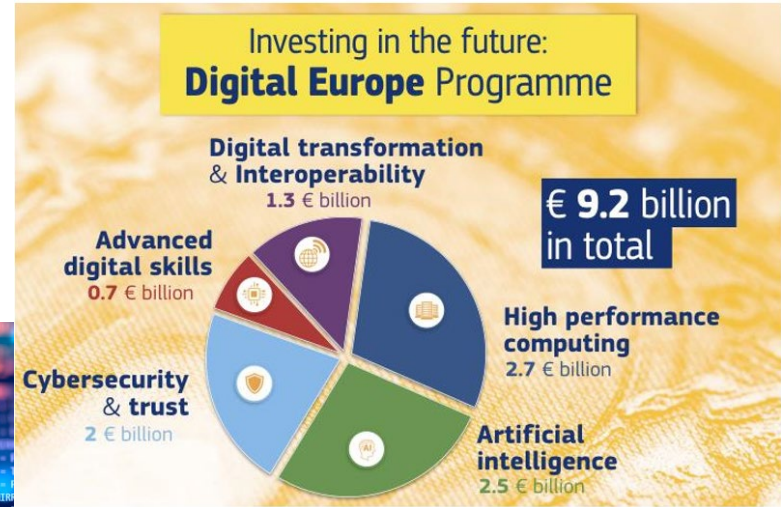
Key elements

- **High importance is given to selected environmental reporting data**
 - Ensure better usability, comparability and access.
 - Further stimulate active dissemination of environmental data in support of environmental monitoring and reporting and policy development (impact assessment, integrated assessment ...).
- **An initial priority list of data sets was prepared to identify and document this reporting data.**
- **Member States are invited to make all data on the list accessible through their spatial data infrastructure.**
- **Most of the data is covered by EU legislation and the deadlines to make this data accessible 'as-is' has already passed in 2013**
- **All Member States have received two letters from the Commission with a kind invitation to start working on the implementation of the priority list of data.**
- **In a first enforcement wave, 4 Member States have received a letter of formal notice for non-compliance in March 2019.**

The INSPIRE roadmap in a changing context



A European Green Deal
I want Europe to strive for more by being the first climate-neutral continent



Public sector and publicly funded data



Private sector data



Research data



High-Value Datasets Implementing Act

Category	Description
1. Geospatial Data	Postcodes, national and local maps (cadastral, topographic, marine, administrative boundaries).
2. Earth observation and environment	Space and situ data (monitoring of the weather and of the quality of land and water, seismicity, energy consumption, the energy performance of buildings and emission levels).
3. Meteorological data	Weather forecasts, rain, wind and atmospheric pressure.
4. Statistics	National, regional and local statistical data with main demographic and economic indicators (gross domestic product, age, unemployment, income, education).
5. Companies	Company and business registers (list of registered companies, ownership and management data, registration identifiers).
6. Transport data	Public transport timetables of all modes of transport, information on public works and the state of the transport network including traffic information.

Proposal for a revision of the Directive on the re-use of public sector information

Guidance on sharing private sector data in the European data economy

Updated Recommendation on access to a preservation of scientific information

2018 DATA PACKAGE
Different policy instruments for different types of data

#dataeconomy #opendata

A Europe fit for the digital age
I want Europe to strive for more by grasping the opportunities from the digital age within safe and ethical boundaries



Build a basic EU capacity for sharing spatial data to build on

Simplify & Demonstrate the added-value

- ✓ Finalise on-going work on IR updates, Validation tool, simplification of Network Service and Metadata requirements , more flexibility for network services to support existing and emerging technology.
- ✓ Showcase usage of priority data sets and wider core data sets in European and national use cases.
- ✓ Data sharing and licensing.

Prepare and agree new MIWP 2020-2024

- ✓ More data prioritization (e.g. core data, high value data sets) and implementation simplification is needed to reach a shared level of implementation across the EU.



INSPIRE 2030 - towards a digital ecosystem for sustainability

Is the philosophy of the INSPIRE Directive still relevant and will it stay relevant until 2030 given the dramatic changes and trends in digitalisation?

- What relevant trends in policy, technology and society do we see? How will they affect the INSPIRE Directive and implementation? What opportunities do they bring? Who are the main actors?
- What are the current and emerging problems that we want to solve? How will the problem evolve over the coming 10-15 years?
- Will there still be place for a specific Directive on spatial data?
- Can INSPIRE become part of a wider digital data “toolbox”? Should we think about integrating INSPIRE in a much wider (legal) framework? With a wider or narrower scope?
- How does the interplay between EU and national legislation affect the results?
- How can we improve the interplay with other legislation?



INSPIRE 2030 - towards a digital ecosystem for sustainability

The 2022 INSPIRE evaluation exercise as an opportunity to align with digital trends and initiatives

- Explore options to align/merge with other digital initiatives/legal acts (e.g. Access to environmental information Directive, Open data and PSI Directive – High Value Datasets, ...).
- Assess the need for specific measures (legal and non-legal) and develop a new multi-annual work programme to implement them.

Thank you for your attention!



12-15 May 2020
Dubrovnik, Croatia

Save the Date!



ENV INSPIRE mailbox env-inspire@ec.europa.eu

More information: <http://inspire.ec.europa.eu>