



Data for the Smart City – the Vienna example

Data for the Smart City - the Vienna example

1

Situation

2

Concepts

3

Data - flashlights

4

Data - cooperations

Key data of Vienna

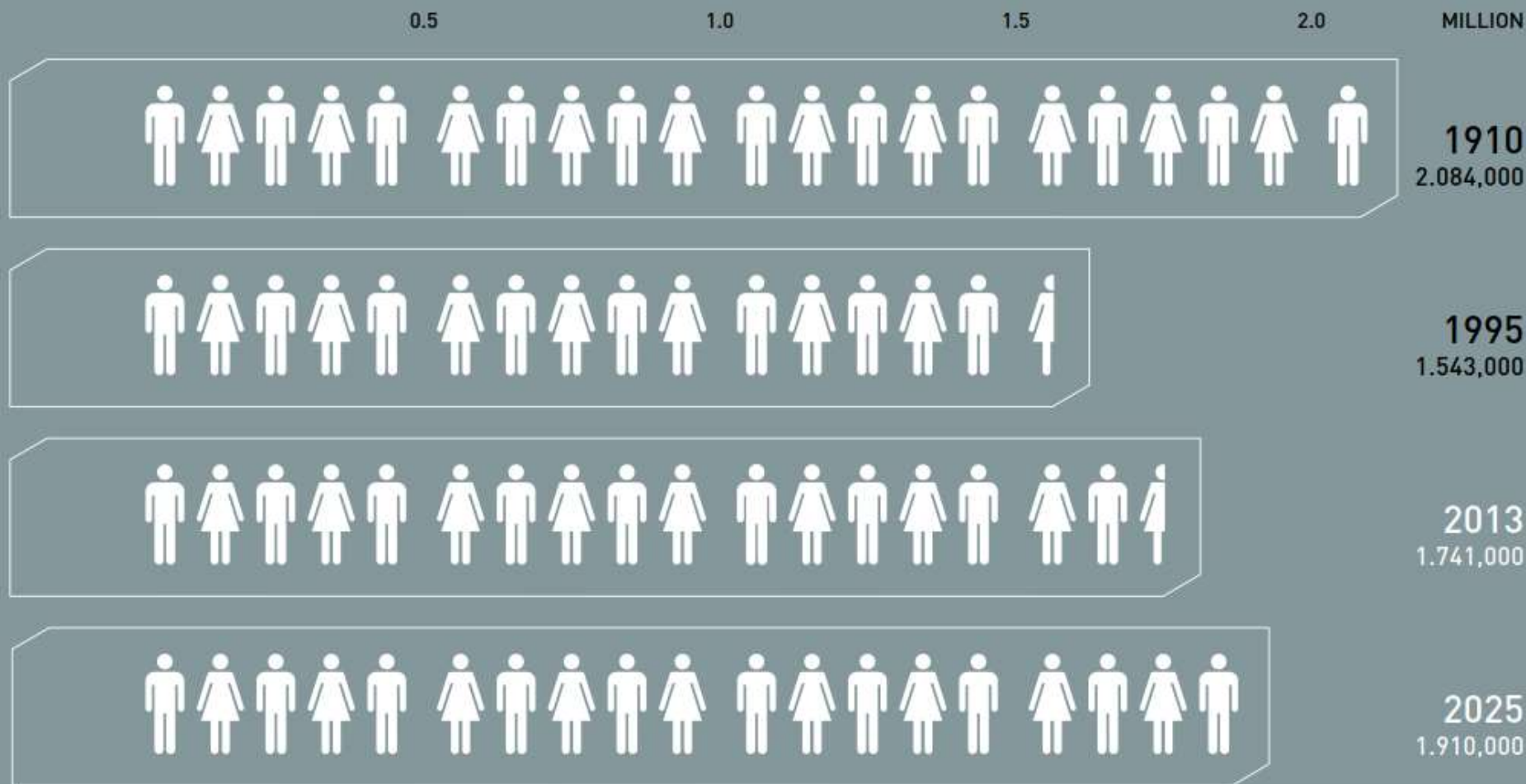
- ❖ City, state and municipality
- ❖ 415 km²
- ❖ Population: 1.797.000
- ❖ 23 districts
- ❖ 79,000 city administration staff
 - 29,000 civil servants
- ❖ 12.3 billion Euro budget
- ❖ 220,000 city-owned apartments
- ❖ 400 primary & vocational schools
- ❖ 12 hospitals
 - 9000 hospital beds



Situation: Vienna and its environs

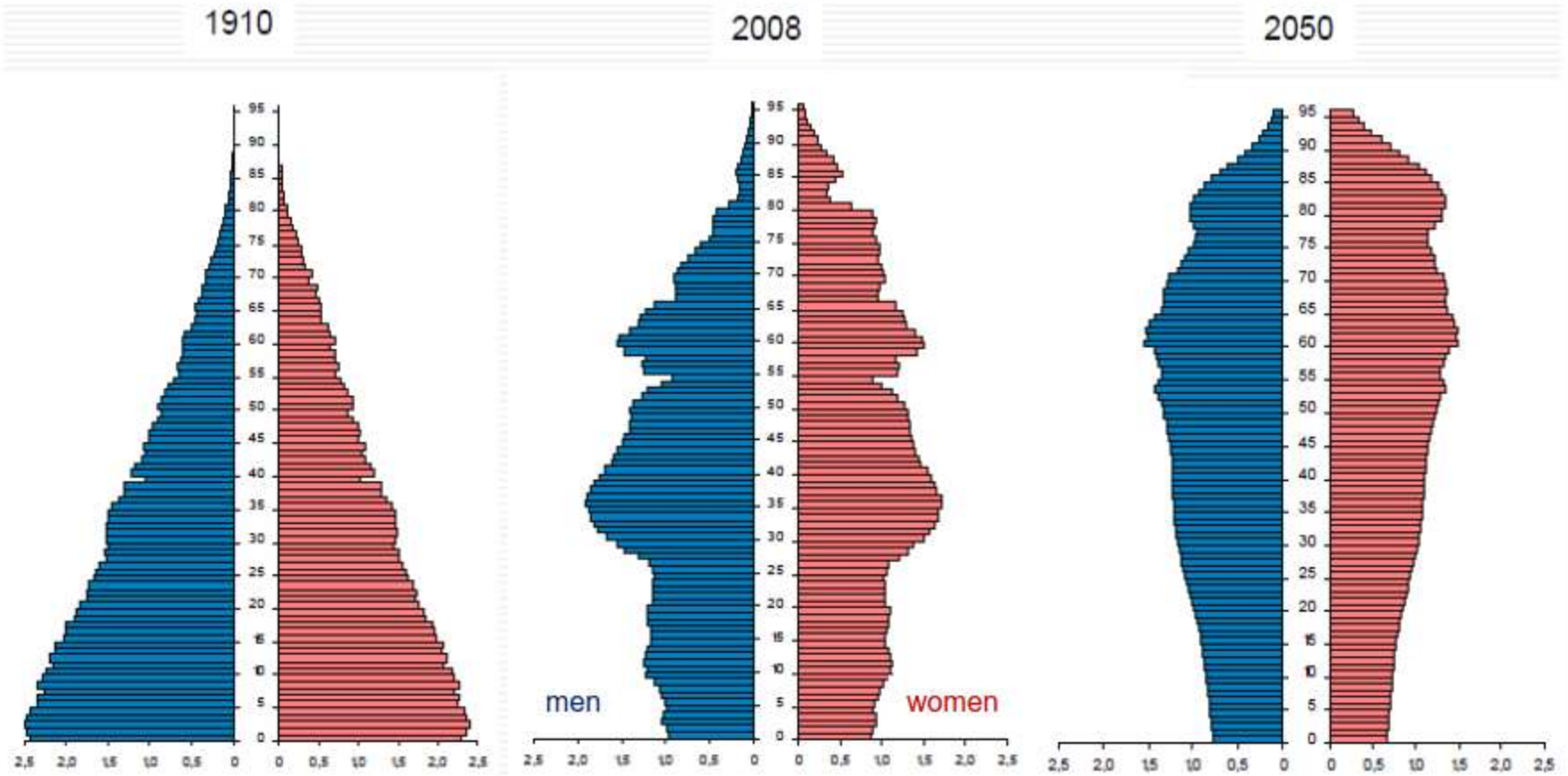


Situation – Demography 1910 to 2025



Demographic development of Vienna from 1910 to 2025

Source: Statistics Austria; STEP 2025



Source: Statistik Austria



Concepts

- STEP 2025 – City Development plan 2015 - 2025
 - Urban Mobility Plan Vienna is part of it
- Smart City Vienna – Framework Strategy
- Digital Agenda Vienna
- Zoning plans
- ...



Concepts: STEP 2025 – City development plan for 2025

Source: MA 18, MA 21, MA 41,
Urban Atlas, Vienna Economic Chamber;
Content and visualisation: MA 18

Sub-centre requiring
further development
(addition of functions, upgrading)

Central Business District expansion
Priority zone for future additions
to central functions

Shopping street of
superordinate importance

Areas with development potential
for housing and workplaces

Development
of areas mainly characterised
by Gründerzeit building stock

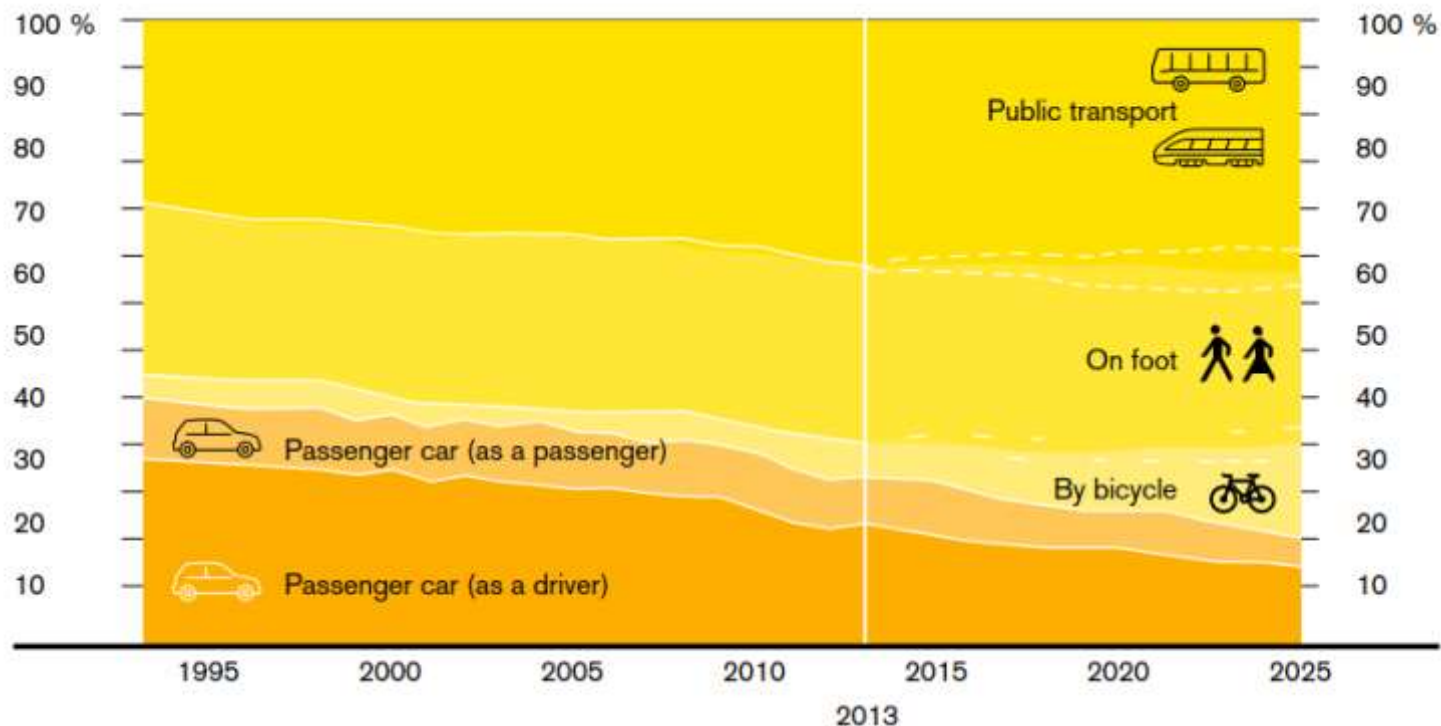
Further development
of areas mainly characterised
by 1950s to 1970s structures

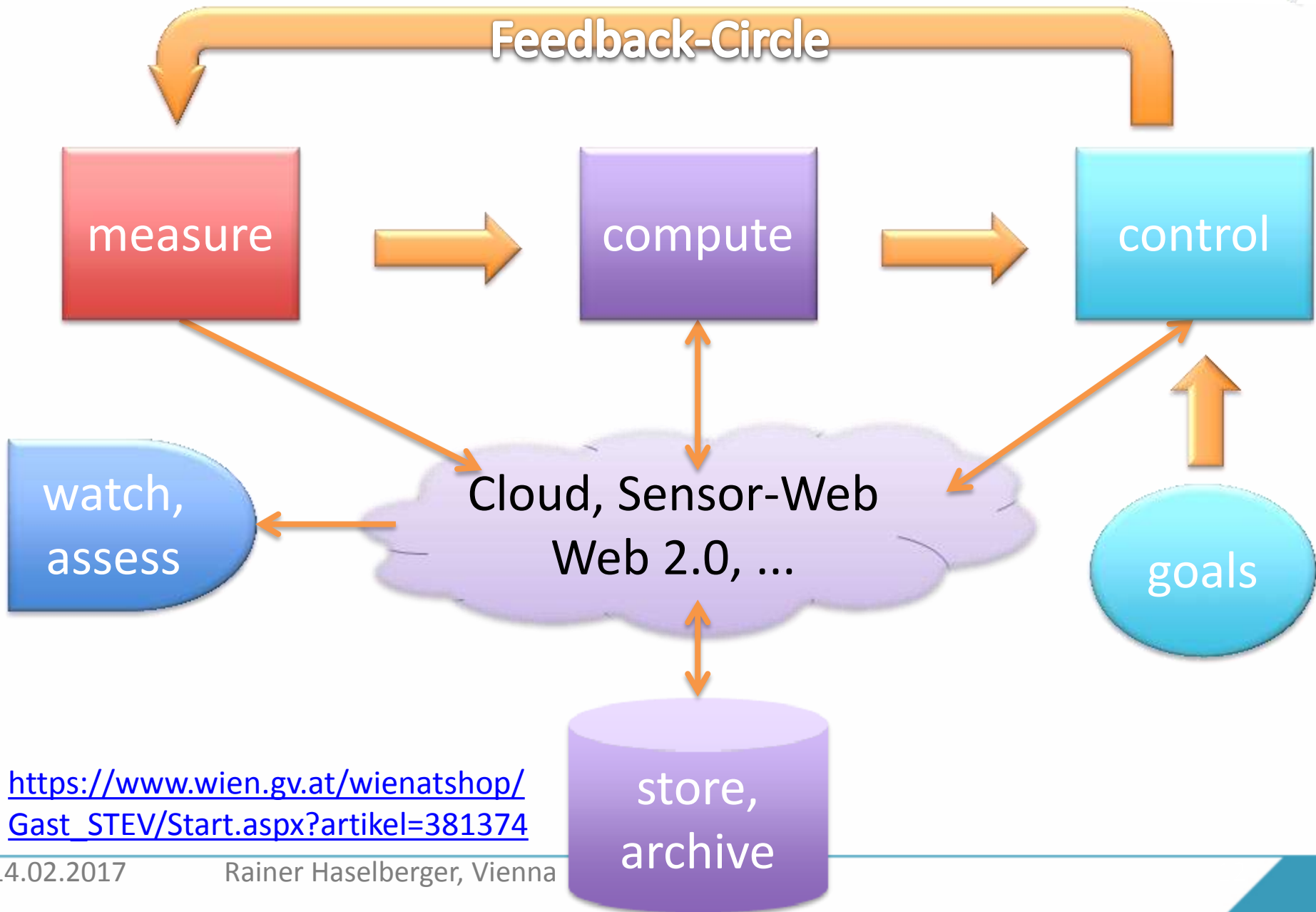
Concepts: STEP 2025 - Green spaces



- **IMPACT TARGET**

- Modal split changes for the Viennese will be reflected in a move away from 72:28 in 2013 to 80% of ecomobility and 20% of car traffic by 2025. Traffic in Vienna will shift to a modal split with a much larger share





https://www.wien.gv.at/wienatshop/Gast_STEV/Start.aspx?artikel=381374

Concepts: Zoning plans – building restrictions



Flächenwidmungs- und Bebauungsplan

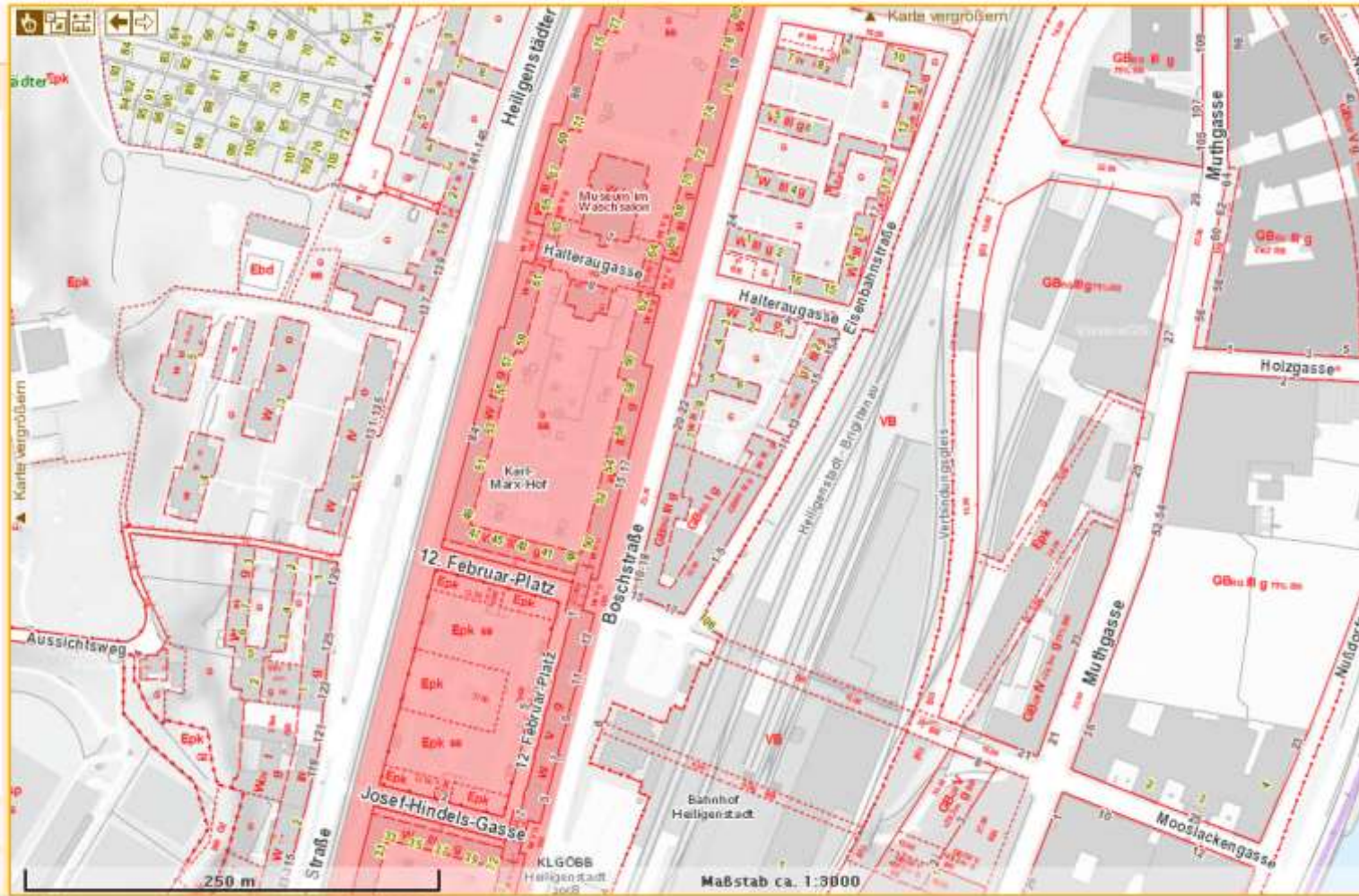
[Feedback](#) | [Link/Einbetten](#) | [Drucken](#)

Adresse eingeben

erweiterte Suche

Karteninhalt

- Flächenwidmung
 - Flächenwidmungs- und Bebauungsplan
 - Generalisierte Flächenwidmung
 - Textliche Bestimmung
 - Plandokumente
 - Bausperre nach § 8 (1)
 - Bausperre nach § 8 (2)
 - Bausperre nach § 8 (6)
 - Verfahren ab öffentlicher Auflage
 - Zonen
 - Schutzzone
 - Wohnzone
 - Katastralgemeinde Grenzen
 - Grundstückskataster
 - Weltkulturerbe
 - Projekte Stadtentwicklung
- Verkehr
- Bildung
- Naturschutz
- Energie



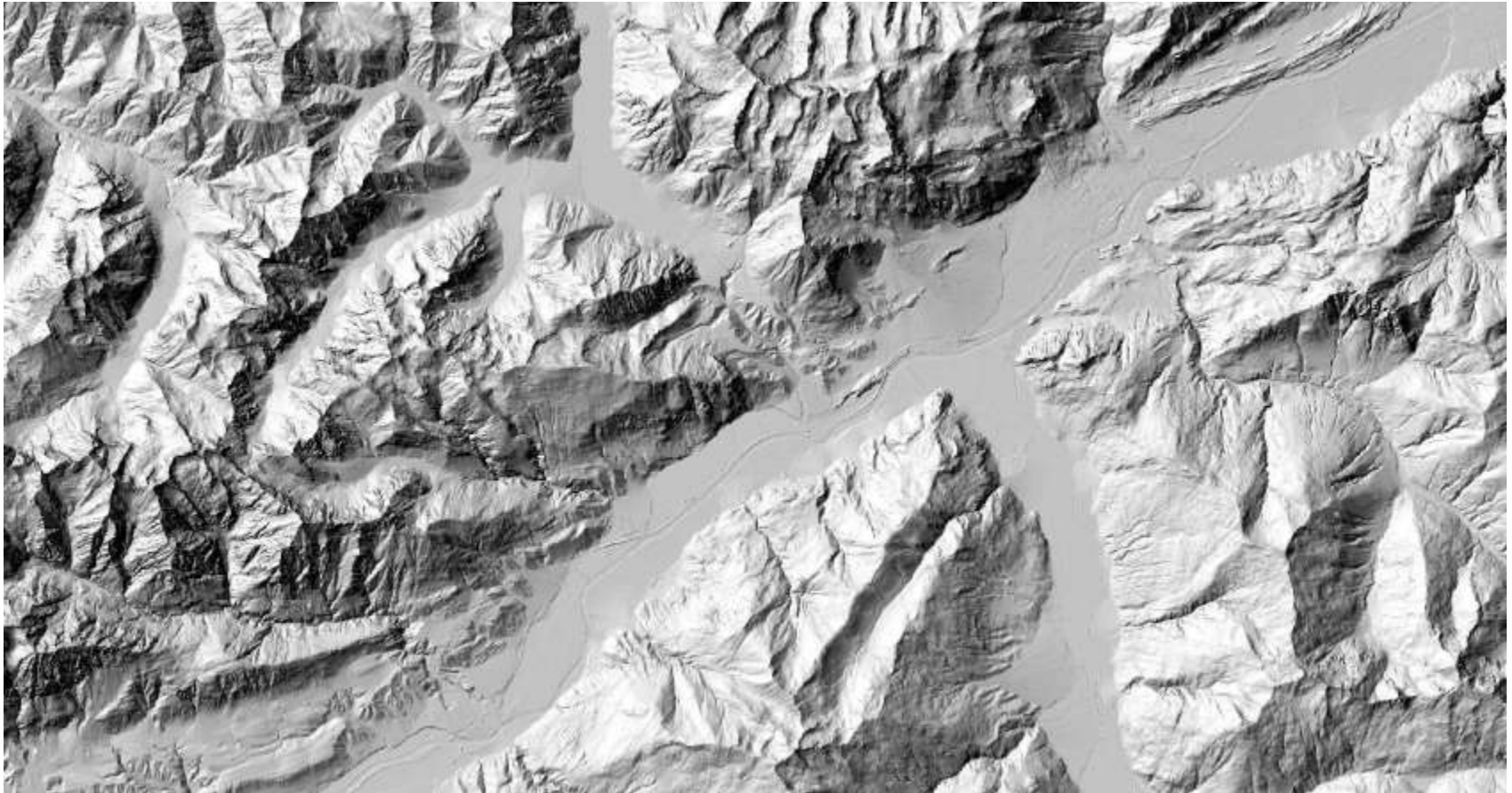
Suche: Ergebnis

Grundstückssuche



Data Some Flashlights





<https://www.wien.gv.at/stadtentwicklung/stadtvermessung/geodaten>
3D-Viewer: www.wien.gv.at/stadtplan3d/

- <https://www.wien.gv.at/english/digitalmap/>



Data: ViennaGIS – environment: solar energy potential



Traffic light installations in Austria's provincial capitals in relation to length of street network (installations*/10 km of street)

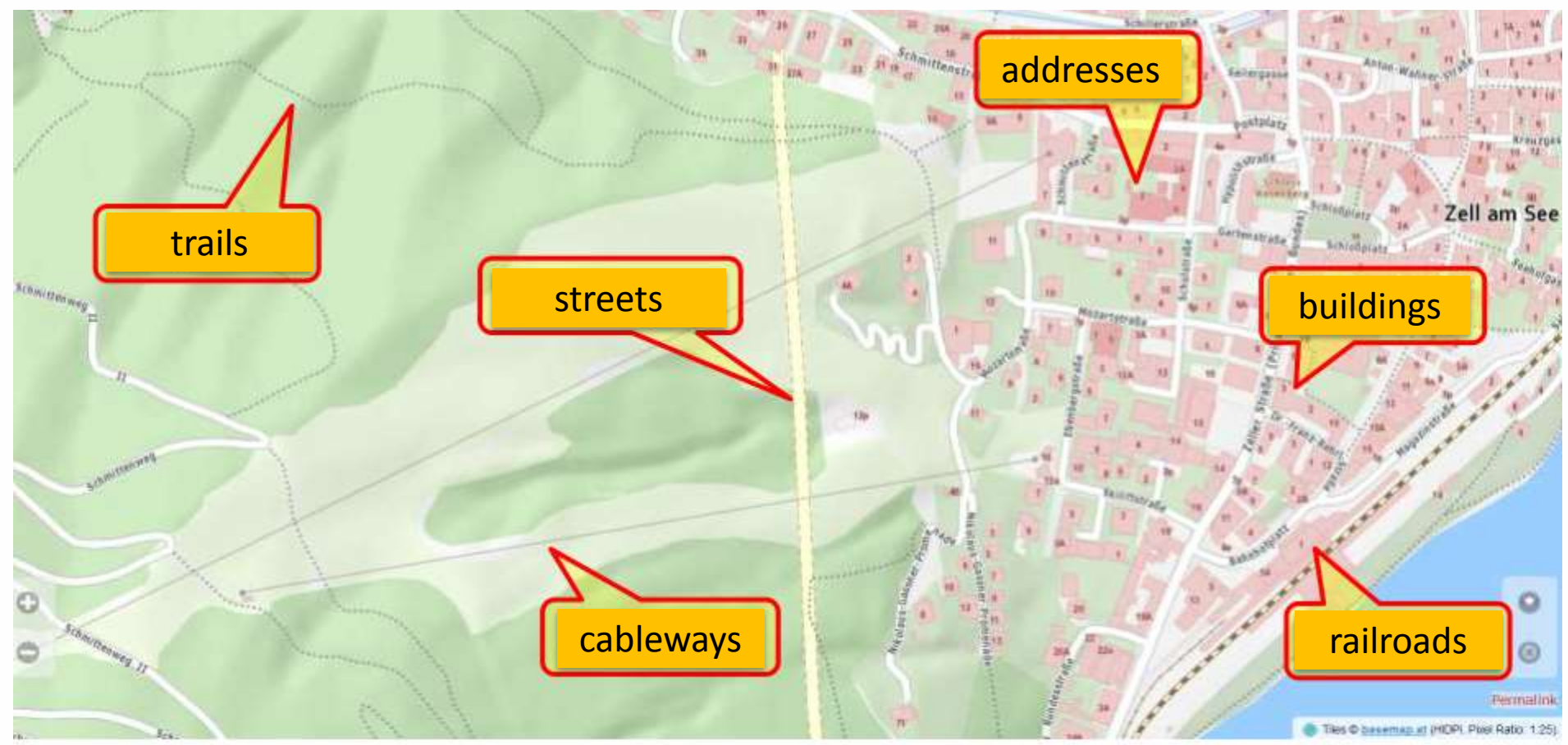


* Number of intersections with traffic lights, including crossings for pedestrians and cyclists

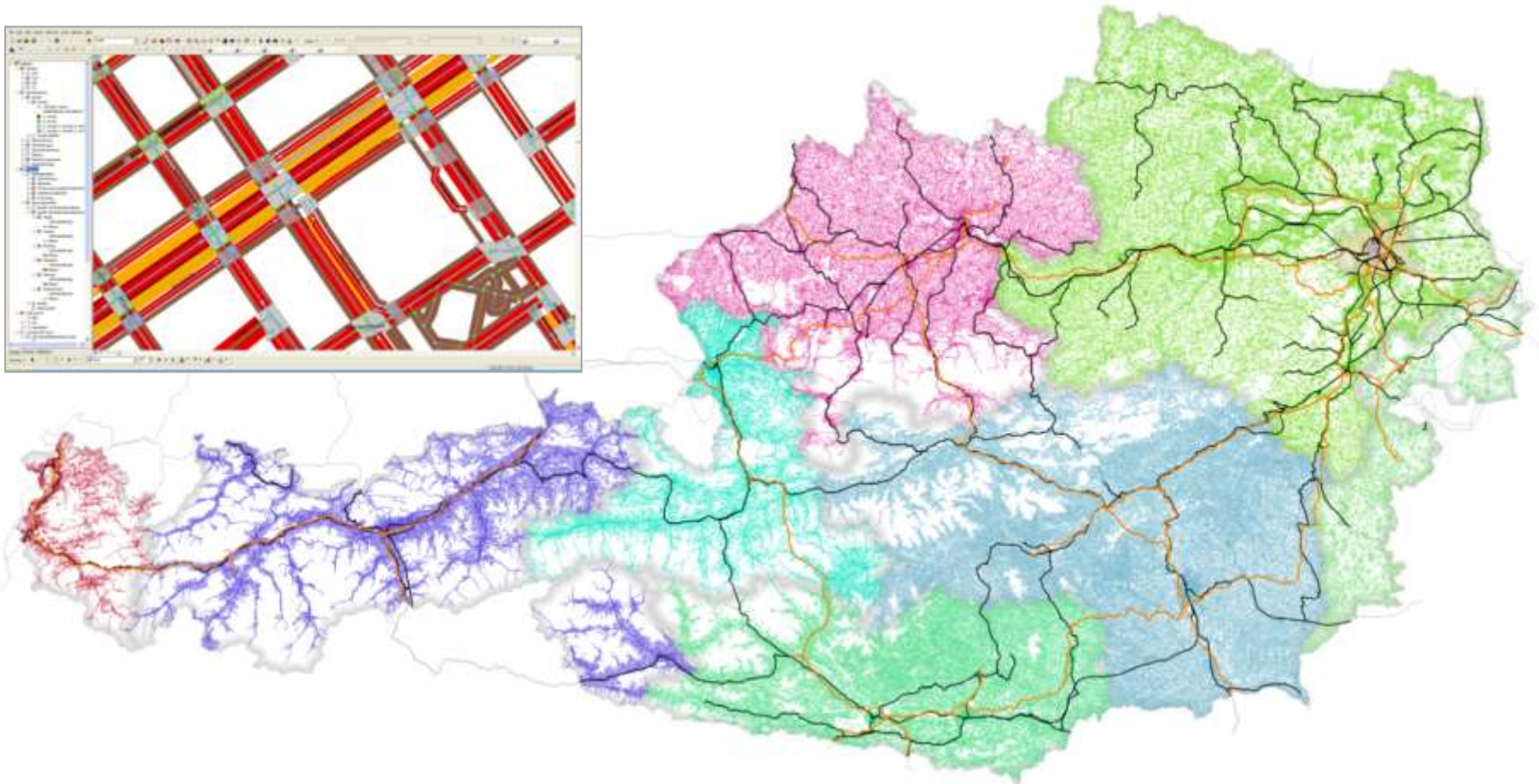
Data source: VCD 2014

- Internal:
 - ViennaGIS – central publication-server of GIS-data
 - All municipal departments
 - www.wien.at/stadtplan
- Regional: ITS Vienna Region: www.its-viennaregion.at/
- National:
 - GIP – national intermodal transportation Graph Austria
www.gip.gv.at
 - VAO – Traffic Information Services Austria: www.AnachB.at
 - Geoland.at: www.geoland.at
 - Open Data Portal Austria:
<https://www.data.gv.at/auftritte/?organisation=stadt-wien>
 - ...
- EU
 - INSPIRE
 - ...

- https://basemap.at/index_en.html

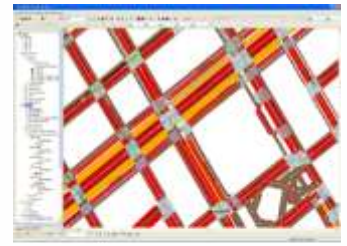
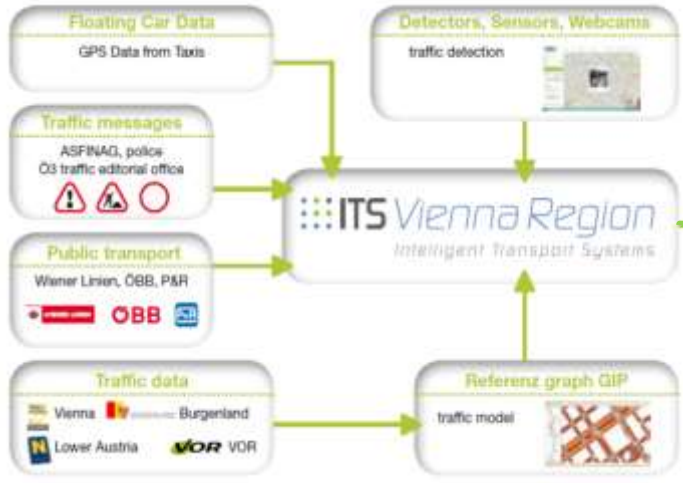


...the common traffic graph for all of Austria

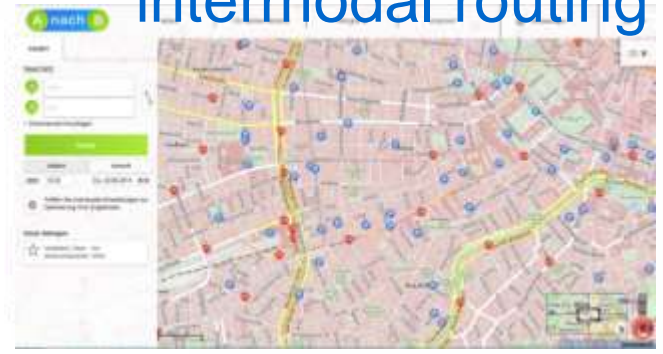


eGovernment / traffic management / graph

up-to-date traffic data



multimodal traffic information and intermodal routing



www.AnachB.at
www.verkehrsauskunft.at

VOR
A NACH B

INFOS | TICKETS | PRICES

A service by **Verkehrsverbund Ost-Region (VOR)** and **ITS Vienna Region**

DE | EN

JOURNEY

New search

Start

Destination

+ Add stopover

search

DEPARTURE

ARRIVAL

Now

11:31

Wk. 08.06.2018

More options

JOURNEYS

LOCATIONS

There are no journeys

Map content: Public transport, Bicycle & by foot, Car, Points of interest

Wien

Leopoldstadt

Landstraße

Wieden

Donau

Landjägermeisteramt

basemap.at

- Questions?

Rainer Haselberger,

rainer.haselberger@wien.gv.at

www.wien.at

Titel	Data for the Smart City
Dokumentnummer	-
Verantwortliche OE	-
Verfasst von	Rainer haselberger
Status	Freigegeben
Vertraulichkeitsstufe	-
Version	1.0
Gültigkeitszeitraum	-
Überprüft am	-
Überprüft von	-
Freigegeben am	-
Freigegeben von	-
Strategische Relevanz	-