



Experiences from developing pan-European datasets'

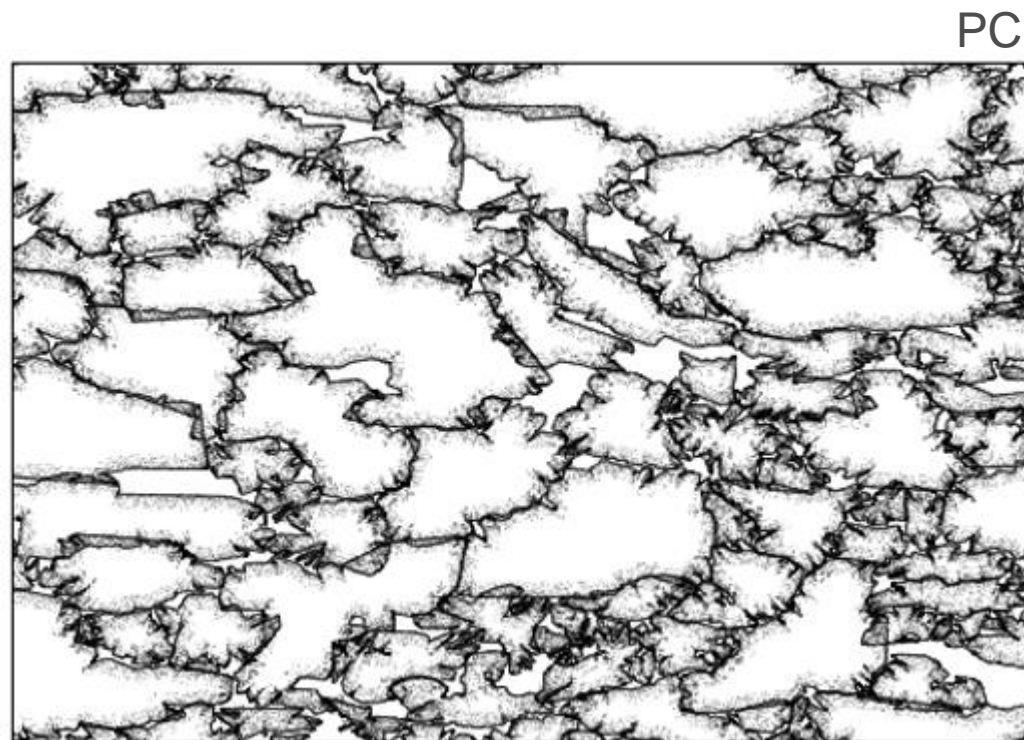
ESTAT – E4 – GISCO

Objective

- Provide a consolidated and consistent overview of Commission needs
- Set out cross-cutting and domain specific requirements of the European Commission for EU wide geospatial information from Member States
- To support to Sustainable Development and other EU policies.
- Seek support from Member States to obtain more and better quality data

EC Geospatial Data Requirements (II)

- Buildings (BU),
- Cadastral Parcels (CP),
- Addresses (AD),
- Administrative units (AU),
- Statistical Units (SU),
- Transport Networks (TN),
- Land Parcel Information System (LPIS)
- Postal Codes (PC)
- Utility and governmental services (US)

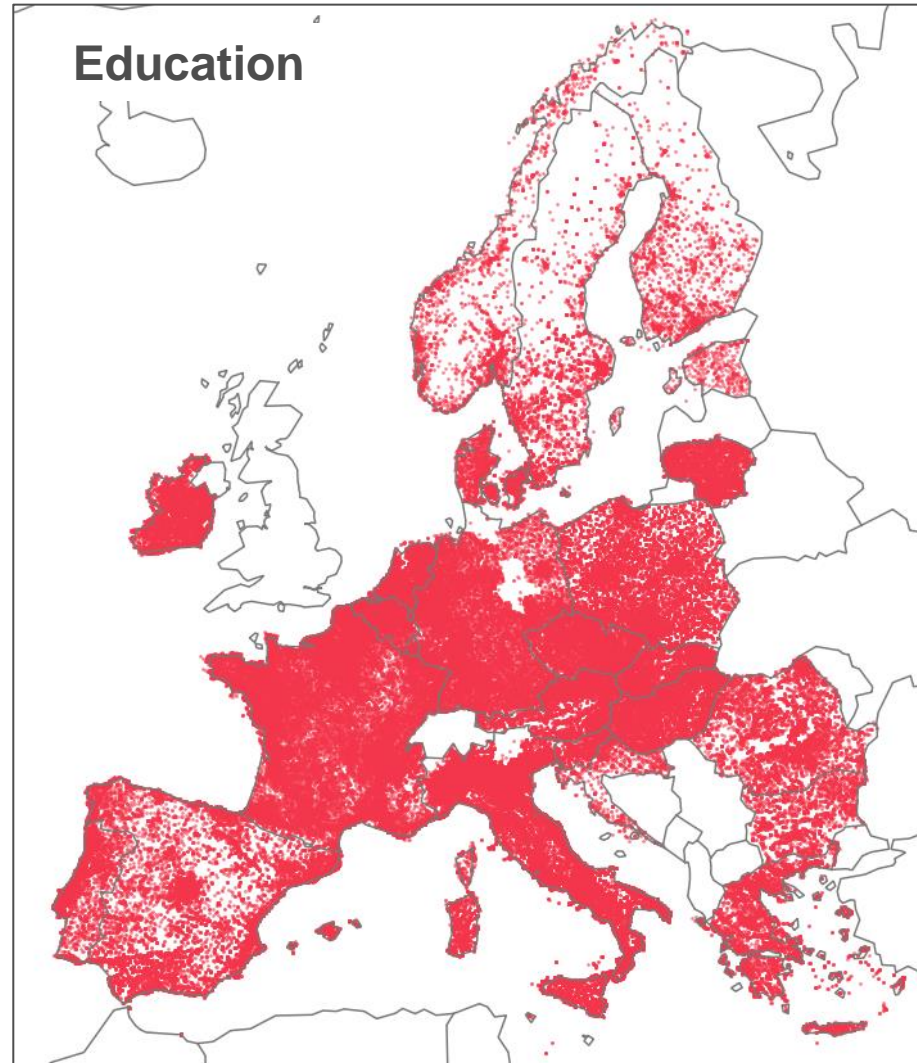
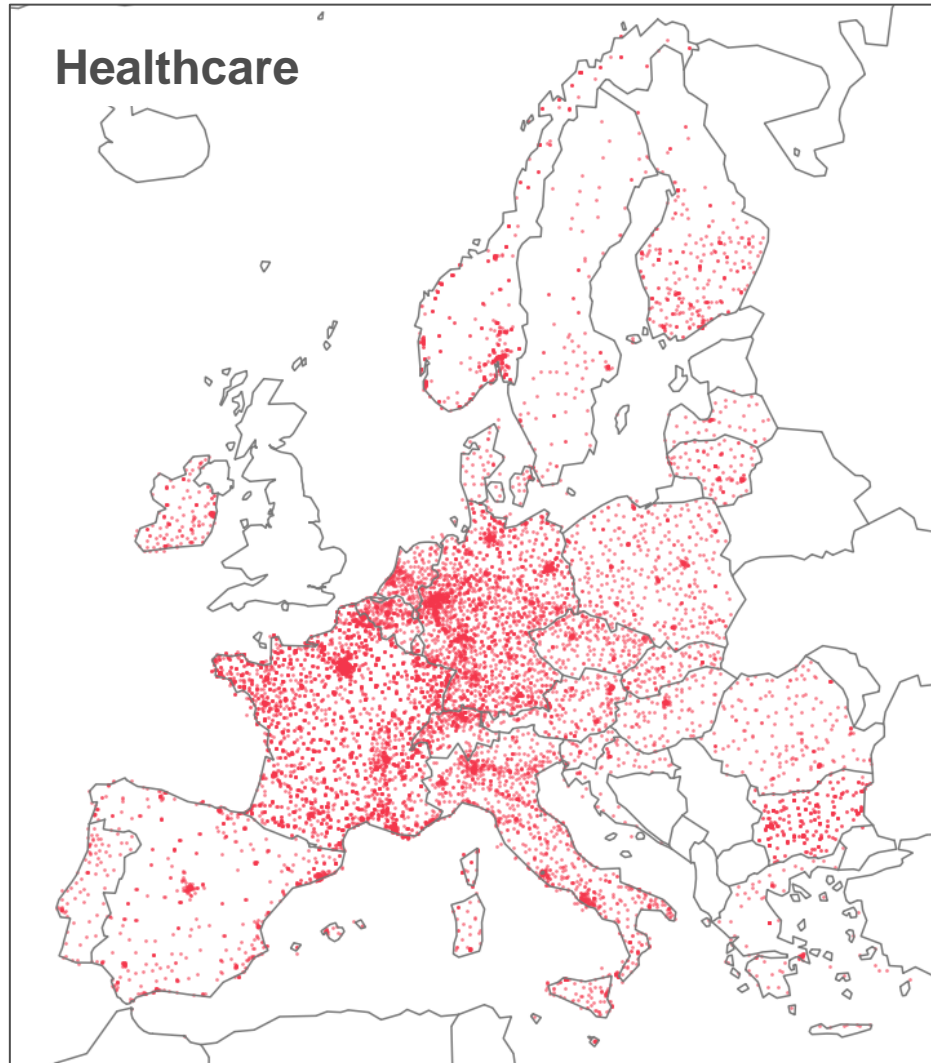


General Requirements for data themes

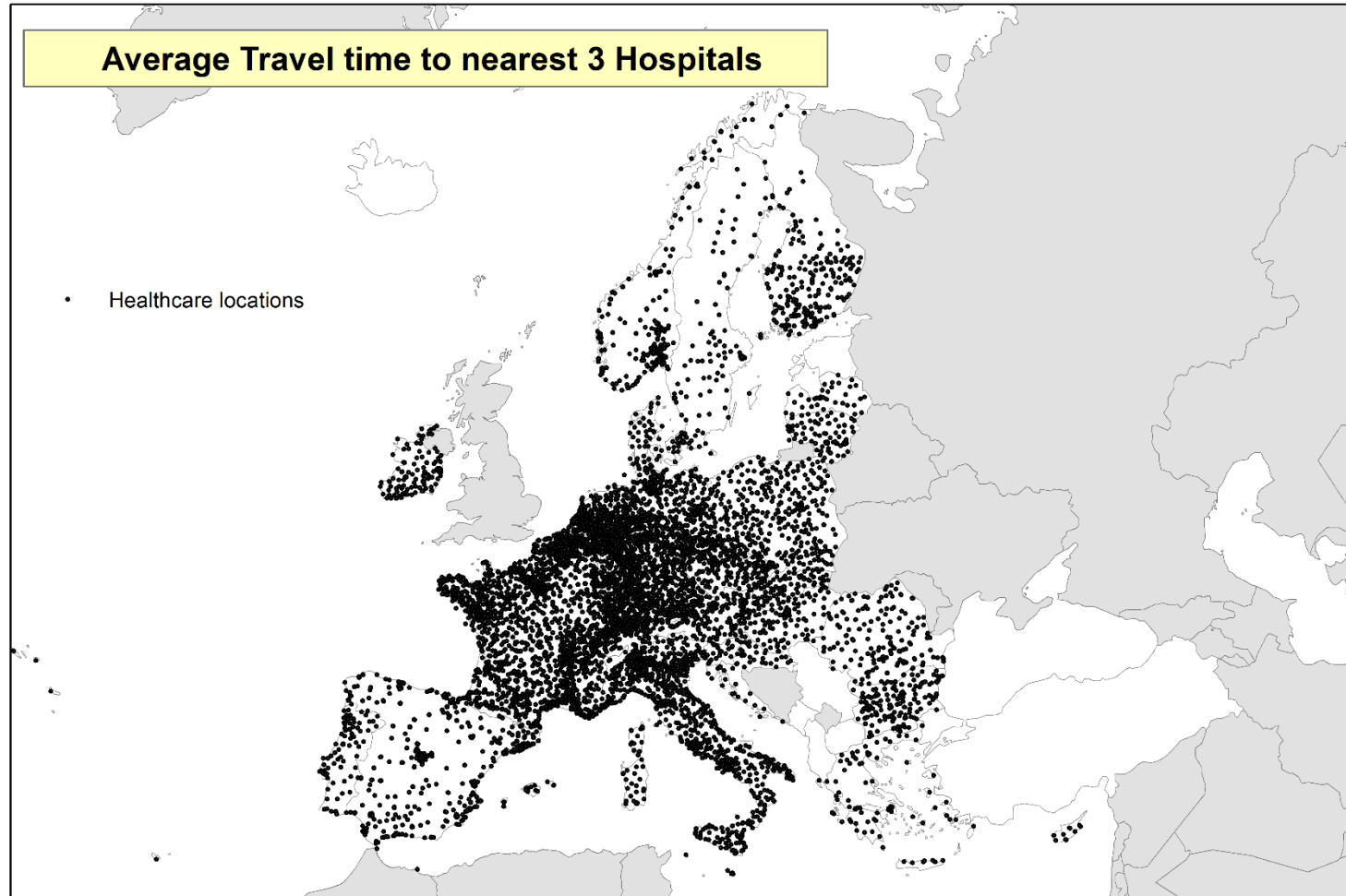
- Unique and persistent identifier
- full geographic extent of the territory
- at the scale ~1: 5000-10.000
- update frequency (incremental) should be once a year or better
- INSPIRE mechanism of life-cycle attributes and versioning.

IN, AG, QA, DI

EC Geospatial Data – (I)

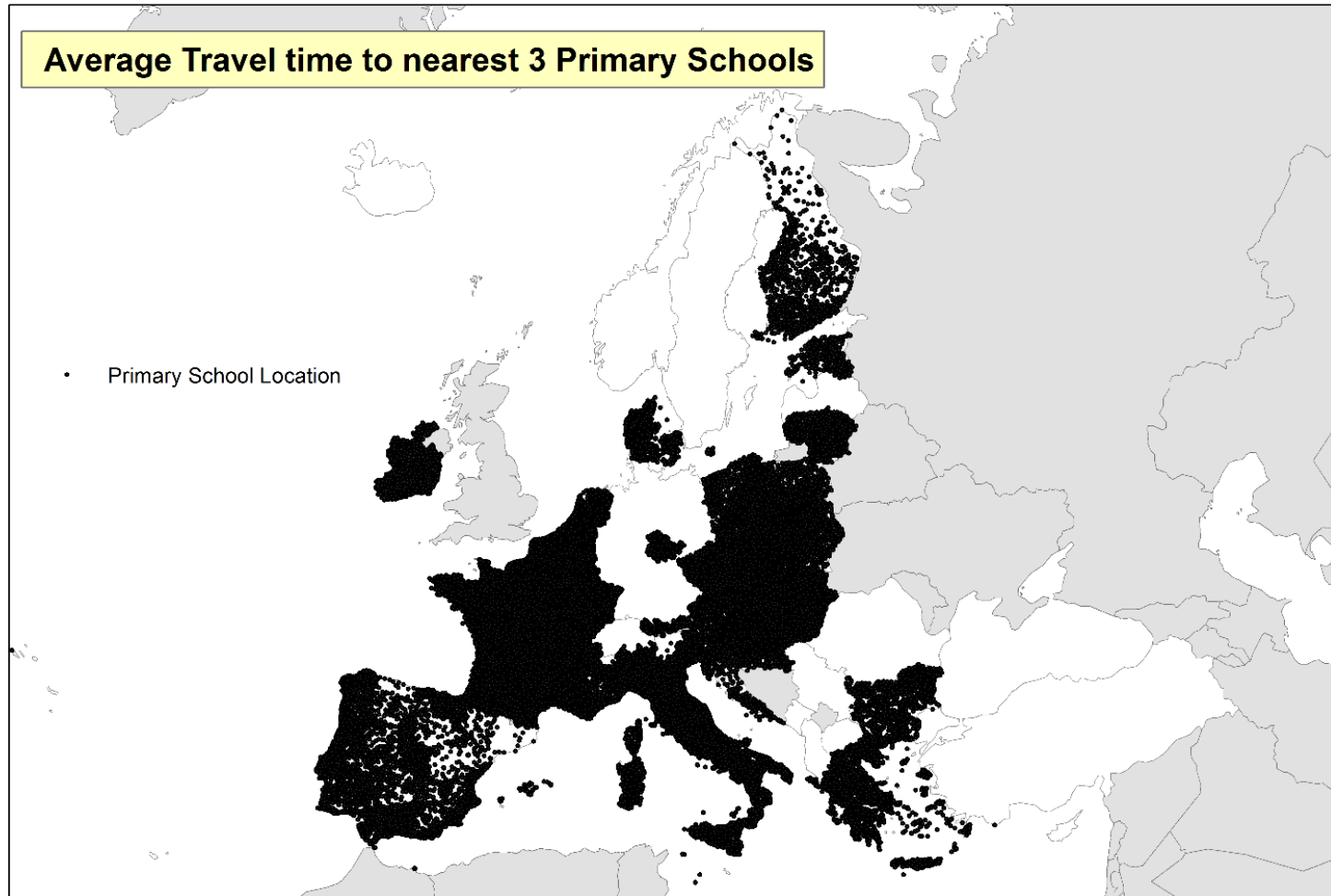


EC Geospatial Data – (III) – Health



© OpenStreetMap contributors

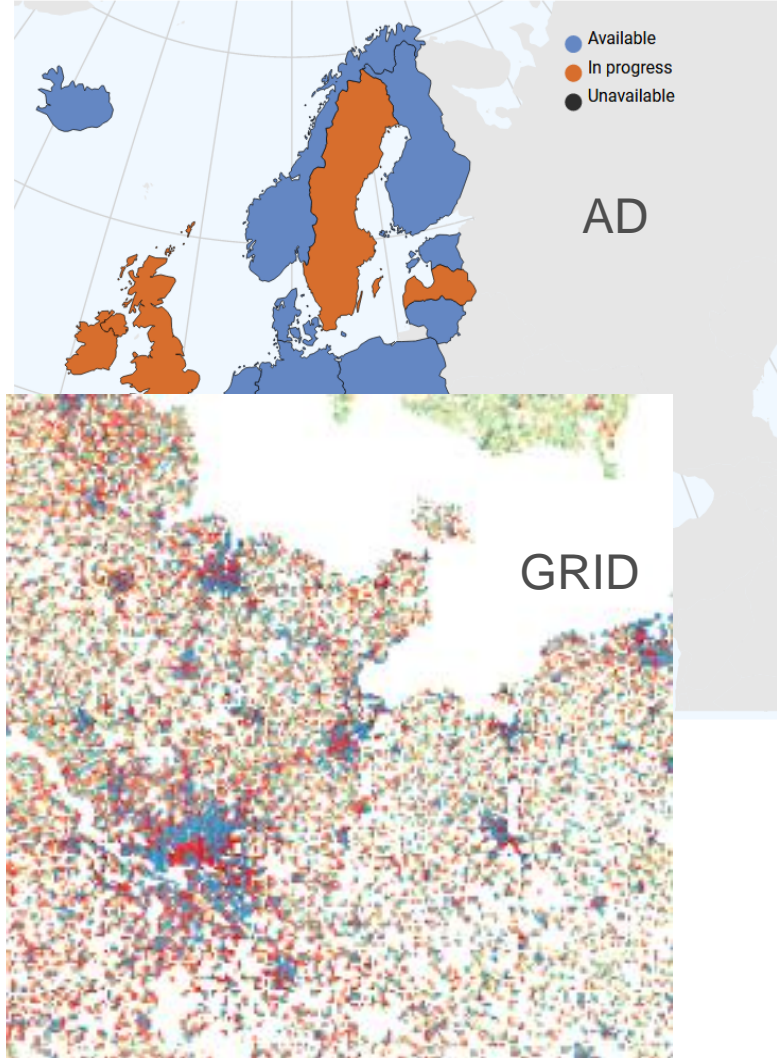
EC Geospatial Data – (III) – Education



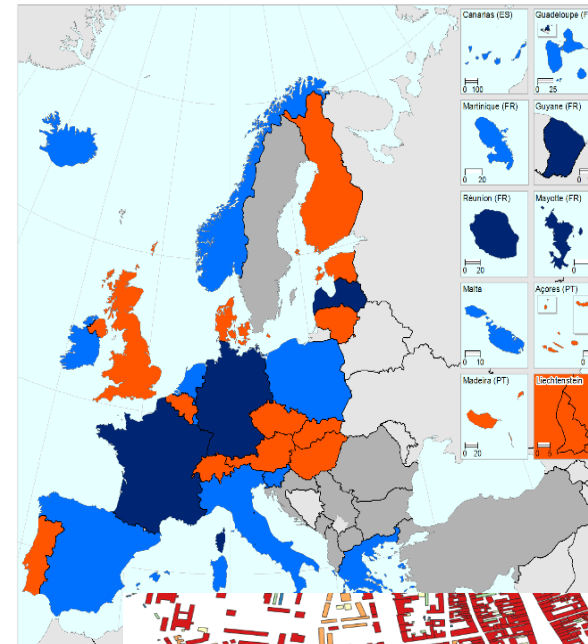
© OpenStreetMap contributors

preliminary data and first calculations – validation in progress

EC Geospatial Data – (II)



Approximate scales



BD



ESTAT Grant for Green Deal

EC Geospatial Data – (IV)

DEVELOPMENT Commission | GISCO Address API

English EN

Home
Endpoints
Documentation
Response format
Geocoding
Structured Search
Free-form Search
Reverse Search

Address Finder [clear](#)

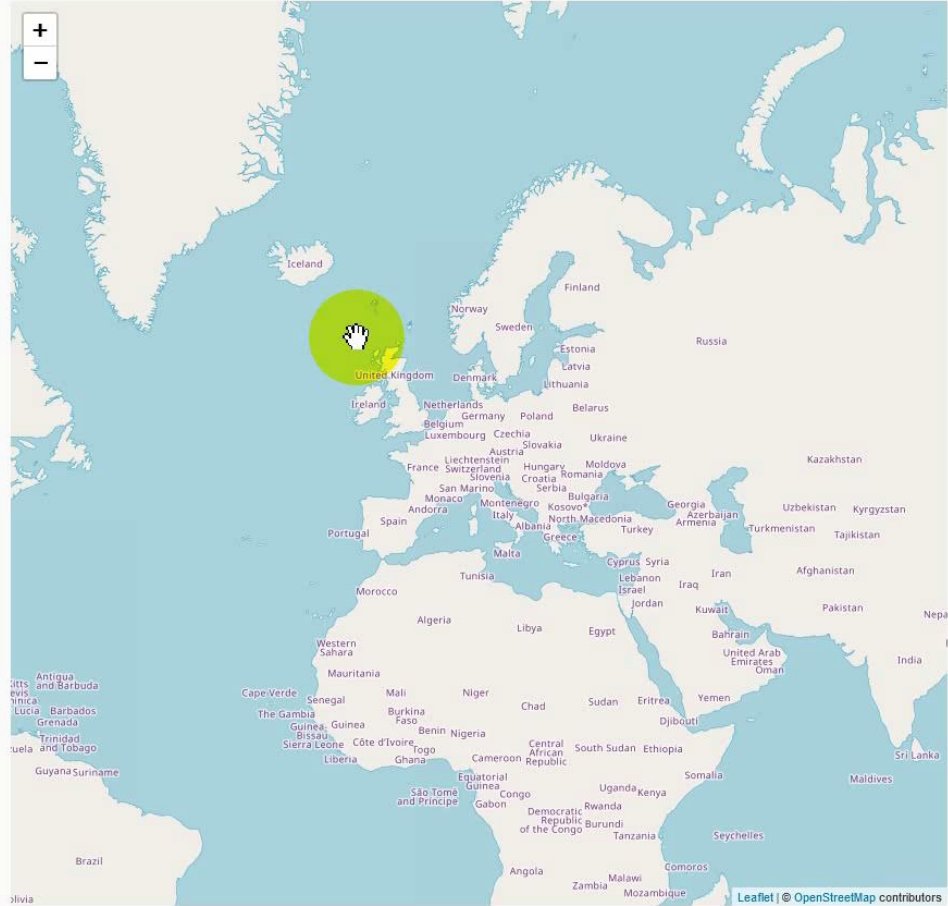
Country:

Province:

City:

Road/street:

House number/ name:



Leaflet | © OpenStreetMap contributors

API + Graphical User Interface based on eUI

Points for consideration

- **Outdated** data (temporally) **Requirement:** update data at least once a year (* we have access now to daily data from some MS)
- Data exists but are **not documented** in Metadata systems (neither European or MS ones). **Requirement:** Data are documented in INSPIRE/EuropeanDataPortal
- **Generalized** data (250k scale vs 10k on ground) – not usable **Requirement:** Data provided according to EU core reference data specifications
- Data are **not aligned** across datasets (AU,AD,PC, BD,TN) (road in the middle of a building, address point in a different AU unit), **Requirement:** QAQC in MS
- **Dispersed datasets per country** without a central authority **Requirement:** Central Access Point
- Quite **varying quality** control across themes and countries **Requirement:** Quality Control
- The question **who is the master** of a dataset occurs on a regular basis. **Requirement:** Coordination inside the MS
- Depending on organisations - Administrative hurdles / **Lock down mentality** –not user centric **Requirement:** Data Access for EC
- **No officially data** exists, but commercial datasets exists for the same area. **Requirement:** Public Administration data MUST exists
- Various **slight variations of INSPIRE** implementation – we prefer INSPIRE implementations. **Requirement:** Harmonising INSPIRE implementations
- **Richness** of datasets **differs** extremely (from line geometries only without attributes to full stack dataset according to INSPIRE specifications) **Requirement:** Rich data content needs to be in distributed datasets
- **Feedback loop** with MS extremely important **Requirement:** Resources at MS level to fix issues
- Missing a central repository of **QAQC tools for Memberstates**

How can Member States contribute?

- Enhance Quality beyond INSPIRE requirements: scale, thematic coverage, temporal coherence;
- Favourable Access and use conditions: open data, reasonable fees and rights to re-disseminate;
- Increase Reactivity: speed at which new data requirements from EU services can be met (INSPIRE/UNGGIM:Europe);
- Better Harmonisation: differences in the implementation and interpretation of INSPIRE make the compilation of pan-EU products difficult without further harmonisation work;
- Ensure Availability of download services as-is. Please ensure communication if you see a white spot...

Thank you

Contact: estat-gisco@ec.europa.eu



© European Union 2021

Unless otherwise noted the reuse of this presentation is authorised under the [CC BY 4.0](https://creativecommons.org/licenses/by/4.0/) license. For any use or reproduction of elements that are not owned by the EU, permission may need to be sought directly from the respective right holders.

